



Serviceton/Inala Built Environment

Volume Three of Three

Peter Brown

April 2020

Serviceton/Inala Built Environment

Author: Peter Brown © 2020

Foreword

The suburb known today as Inala began life as 'Serviceton' a post World War II privately developed co-operative housing estate established by the Serviceton Society of Ex-servicemen to provide homes and facilities for its members. In 1950 when the society ran into financial difficulties the Queensland Housing Commission (QHC) purchased its assets and plans. Some 3,500 homes were developed by QHC in the 1950s/1960s and the suburb was largely completed by 1970. A new 'Satellite' town built by government in response to the post-war housing shortage.

In 1951 the name was changed from Serviceton because of Post Office concern about confusion with a similar suburb name in Victoria. The new name 'Inala' was selected from the local Aboriginal language by the Society instigator Harold (Hock) Davis and translates approximately as 'peaceful resting place', or 'good place to camp'.

Since 1996 the Richlands, Inala & Suburbs History Group have been researching, recording and contributing to the preservation of the area's local history. The group has published a number of booklets and books, holds regular meetings and events, and maintains an indexed research resource.

The following Research Papers and Notes have been written by the author who is a more recent member of the group. Their focus is the built environment, complementing and supplementing the existing body of work. They have been prepared utilising the resources and knowledge of the group together with new additional research at various Archives and Libraries. Particularly relevant RI&SHG works are listed in the Bibliography, other sources are identified in the footnotes.

They are a 'work in progress' and research continues on all Papers. Additional information and corrections are welcome.

Peter Brown

gonebush6@bigpond.com

Issue One: April 2020

Private Study Paper not for general publication

Contents

Volume One

- 1. Estate Development*
- 2. Street Naming*
- 3. Retailing to 1953*
- 4. Retailing 1953 Onwards*

Volume Two

- 5. The Civic Centre*
- 6. Civic Precinct*
- 7. Commercial Buildings*

Volume Three

8. Community Buildings and Groups	3
Schools	
Pre-school and child care	
TAFE	
Aboriginal studies	
Other community buildings	
Other community groups	
9. Places of Worship	39
Research in 2017	
<i>Earliest activity</i>	
Individual places of worship	
Summary	
10. The Change of Name in 1951	94
Name change	
Precis	
Bibliography – relevant RI&SHG publications	107

SERVICETON/INALA – BUILT ENVIRONMENT

8. COMMUNITY BUILDINGS AND GROUPS

Schools

Richland State School opened in 1934 and served the local community including the very early Society settlers. From 1953 it also served the new QHC families arriving in the nearby Serviceton area until the Inala State School opened in 1955. Some children went to Darra State School.

The original Serviceton Society's master plan of 1946 for a Garden City, provided for schools to be located adjacent to the Civic Centre.

According to a newspaper report in June 1950, the Society had surveyed the first 500 home sites and Council zoning for this area had been completed including an area for a shopping centre [Lavender/Lilac Streets], a school and two parks [Portion 373 Sub 5]. The report also said that plans for the remaining 700 acres [Portions 355 and 361] had been lodged with Council for approval, and these included 1739 house lots together with a Civic Centre, hospital, high school, two primary schools, and three shopping centres.

The QHC included in their plans several school sites but only in land set aside for creek-side parkland and uneconomical for housing construction.¹ The Education Department seem to have declined these sites and resumed land outside the periphery of Serviceton/Inala, meaning that pupils had to cross main roads to get to them, and that they were not located close to other community facilities. The only school initially within the true Inala area from 1963 was St Mark's Catholic Primary School in parkland adjacent Eucalypt Street.

Richlands East State School and Richlands State High School on Poinsettia Street only became within the residential area because the Education Department compulsorily purchased private land (Portion 47 Sub 3) for them in 1962, which was the catalyst for QHC being able to purchase the adjacent future 'Stars' area, Portion 364, in 1963.

Many children attending Secondary Schools had to travel long distances to complete their education; students had to travel by train to Indooroopilly State High School or other schools. It was not until the 1960s that any Secondary Schools were opened locally, beginning with

¹ QHC Annual Report 1952-53 JOL

Corinda State High School in 1960, then Inala State High School and Oxley State High School in 1962.

From 1970 to 1995 there were 10 schools in and adjacent to Inala, now reduced to 8:

Richland State School opened in 1934 with 26 Richland's pupils, and also served the new QHC families arriving from 1953; it closed 2010.

Inala State School opened on Rosemary Street in 1955 with 282 pupils.

Serviceton State School (renamed Durack in 2000) opened on Inala Avenue in 1959 with 263 pupils.

Inala West State School opened on Deodar Street in 1960 with 117 pupils and closed in 2009.

Inala State High School opened on Glenala Street in 1962 with 143 students) (renamed Glenala High in 1995)

Serviceton South State School opened on Lorikeet Street in 1963 with 980 pupils.

St Mark's Catholic Primary School opened in 1963

Richlands East State School opened on Poinsettia Street in 1967.

Inala Special School, (later renamed Western Suburbs Special School) opened on Glenala Road in 1968.

Richlands State High School opened on Poinsettia Street in 1970 but closed in 1996/7 when amalgamated into Inala State High School (later Glenala High) with 1592 students

A State School Reserve was established at south end of Archerfield Road c.1994²

The Australian International Islamic College opened on Blunder Road in 2005

The history of the individual schools is not included here. Most schools have their own websites, and some have their own formal histories i.e. Richlands State School 75th Anniversary book by the RISHG.

² Riley G Some more history of our Inala and Suburbs 1994 front cover

INALA JOURNAL

Printed by Roel Printing Service, for A. & N. Goss Publishing, P.O. Box 8, Civic Centre.
Distribution Area: Inala and surrounding areas.

VOL. 6, ISSUE No. 19 WEDNESDAY, 5th MAY, 1976

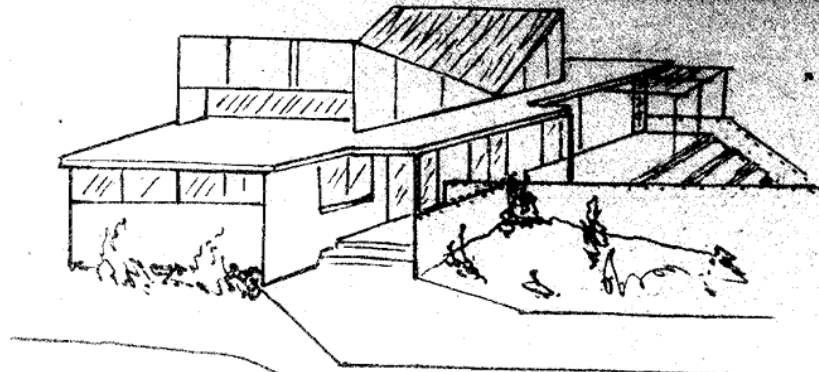
Irigan's
Ant Carpets
OXLEY ROAD,
OXLEY
(Oxley Hotel)
3 OWN HOME WITH
ANT SAMPLE RANGE
QUALITY CARPETS
8277

Goodna-Gailes
Estate Agents
(Member R.E.I.Q.)
\$18,000 to \$27,000
1. Well established
1 W/B
1 in at this Price
1. Garage, etc.
1. for Future Buyers
9 6844
Les Forge 372 1104

Service
VIDRIES
4 DAYS A WEEK
VIC CENTRE
'A STREET
PLUS
NING SERVICE
Civic Centre
2 3633

A CITY
SELLERS
CENTRE, INALA
372 1027
Manufacturing
& Watchmakers
Jewellers set in the design
of your choice.
PIERCING
OPALS and
GEMS
Watch repairs
KORO, CERTINA, BULOVA

St. Marks Library Opened



St. Mark's Primary School Pilot Library was blessed and opened by His Grace, Archbishop Rush last Wednesday evening, 21st April.

This library was equally funded by St. Mark's Parish and the Australian Government. It was designed by Cullen & Partners Architects and built by Ireland Constructions. It is hoped that this library will be of great assistance and an inspiration to both teachers and pupils at St. Mark's School.

Guests were welcomed by Rev. Father G. Lyons, P.P. and Mr. W. Hayden, M.P. unveiled the Commemorative Plaque. The School Principal, Mr. P. Gifford, thanked the speakers and guests for attending.

St. Mark's School Library believes that its responsibility is to assist the school in providing the best education for the students of the school by supplying the students and teachers with the best possible information available in books and any other resource materials.

We hope that the library will be an integral part of the total educational programme.

That it shall provide boys and girls with library materials and services to meet the needs of the curriculum, and a broad collection of materials (books, periodicals, newspapers and audio-visual aids) to meet the individual needs of the students;

That it shall arouse

in students an interest in books and other materials, and provide service to broaden this interest in a pleasant and stimulating atmosphere.

That the students will be led, whenever they have the chance, to collect books to make a veritable personal library.

That it shall help students become skilful and discriminating users of libraries and of printed and audio-visual materials by providing continuous, progressive instruction in the use of the library, its materials, and services;

That through enjoyable and satisfying use of resources, the students may grow in critical judgement and appreciation, develop helpful interests, make satisfactory personal adjustments, and acquire desirable social attitudes;

That it shall develop good public relations

through pleasant and efficient service to students, teachers, staff and community;

That it shall work with teachers in the selection and use of all types of library materials which contribute to the teaching programme;

That it shall keep before it the future aim of including in its resources materials and services for use by adolescent and adult members of the community;

That it shall introduce pupils to community libraries as soon as possible and cooperate with those libraries in their efforts to encourage continuing education and cultural growth;

That it shall cooperate with other Teacher Librarians, community librarians, and community leaders in developing an overall library programme for the area.

NEW SERVICE FOR STUDENTS

The Manager of the Inala Office of the Commonwealth Employment Service, Mr. A. J. Nixon, has announced details of a new service for students at Inala, Oxley and Richlands High Schools.

Mr. Nixon said that whereas in the past, visits to schools had been irregular, and generally concentrated over a few days once each year, it was now proposed that an Employment Officer visit each school one day each month. During this time, students would be able to discuss a wide range of topics relating to employment matters. Students who wished to see the Employment Officer would be required to arrange an appointment through the school's Guidance Officer.

Mr. Nixon said that his Department was happy to be able to provide this new service which it was hoped would enable students to be more regularly advised of employ-

ment topics of interest to them. He acknowledged the support of Principals and Guidance Officers in the project.

Mr. Nixon said that in addition to individual interviews, it was planned to hold group activities, films, class talks, etc.

ENGAGEMENT
Powell — Carney
Mr. & Mrs. I. Powell
Karo St., Inala have much pleasure in announcing the engagement of their only daughter Maureen to Stephen, only son of Mr. & Mrs. P. Carney, Polaris St., Inala.

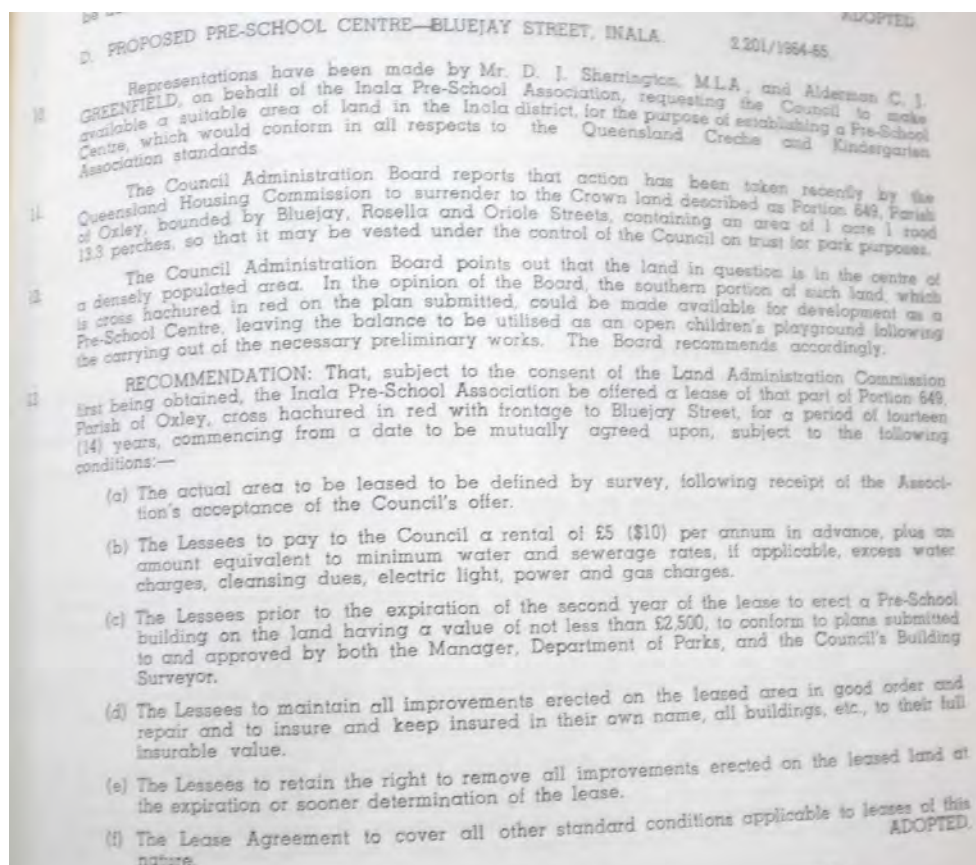
INALA CIVIC CENTRE

Inala Men's Fashions

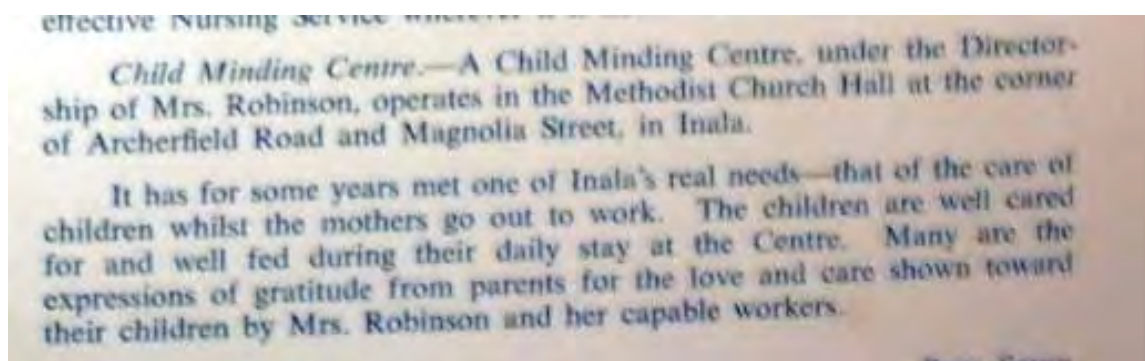
Pre-schools/Child Care

Closely allied to the kindergarten, schools and many community organizations is the Inala Playground and Recreation Association which was founded in 1960

Pre school Bluejay Street³



See image Dr White G Riley p49



³ BCC Council minutes 1964-65 minute 2201

Kindy Meeting. A public meeting was called for July 27th at the Serviceton State School to discuss the problem of establishing a kindergarten and Pre-school centre in the Serviceton area. Miss Peggy Banff of the Queensland Creche and Kindergarten Association addressed the meeting and gave very helpful advice and information to those interested in the formation of a kindergarten. An Association which will be called the Inala Pre-school Association was formed, and the following were elected to hold office. President Mrs R. Hopoley, Vice President Mrs G. Rule, Secretary Mrs K. Plumb, Treasurer Mrs Winlaw. The aims of the Association are to proceed with plans to have a fully affiliated Pre-school in the Serviceton area. Meetings will be held at the home of the president on the first Wednesday of each month commencing at 7.30pm. Next meeting will be on September 2nd and any one who is interested in this question, or who might have any advice or assistance to offer is cordially invited to attend.

4

G. Riley:⁵ extract follows

IN MEMORY OF MY DEAR FRIEND MARIE ROBINSON 21.1.75.

How do we old working mums of Inala say "Thank You" and "Rest in Peace" to a grand person such as our Mrs Robinson was, who passed away 21.1.75 and was cremated on Friday 24.1.75.

About 21 years ago (from time of writing) Mrs M. Robinson started The Inala Minding Centre. Looking after children, in a little Methodist Church Hall in Archerfield Rd, Inala. Perhaps Inala might not have grown and expanded if it had not been for her help in this way. It was not all easy and pleasant for her because she had to comply with Health and Council regulations, and often with a lot of expense and inconvenience to herself and family. She had the pleasure of being present when some of these children were married, and it was even greater pleasure when they brought their children to attend the centre.

From this one little church hall 3 good centres, with a lot of hard work, and no help from the government in those days, (with the exception of free milk on weekdays) and a lot of help and assistance from our Dr. G. Whyte.

Then due to ill health and unforeseen circumstances, Mrs Robinson had to vacate these premises on 29.12.72.

All her Friends, her old staff and the working mums of Inala, join together and with me, in this little way say "Thank You Mrs Robinson for all your help".

GOD BLESS YOU. REST IN PEACE.

G. Riley, 9 Tamarind Street Inala 4077

⁴ Carter H Inala a City within a City 1964

⁵ Riley G History of our Inala and suburbs 1988 p 49



Wandarrah Pre-school and Community centre corner of Lilac Street and Magnolia Street

See also corner of Poinsianna and Azalea

See also 26 Aspen St BVN plans in images and land record.

TAFE

The Bremer TAFE College opened in 1996 on the site of the Richlands State High School after it closed. The college closed in 1999 when the Inala TAFE campus opened at Thrush Street.⁶

The Inala campus of TAFE is at 54 Thrush Street Inala. According to its website the Inala location specializes in delivering adult migrant English training.⁷

Government statement Tuesday, January 24, 2017:⁸

‘Inala TAFE doubles in size to help job seekers and new arrivals

TAFE Queensland’s Inala campus has doubled its teaching area with a \$3.4 million expansion officially opened today by Premier and local member Anastacia Palaszczuk.

The expansion includes ten new semi-demountable classrooms, an extra 65 carparks and new toilet facilities for TAFE Queensland’s multicultural students.

⁶ Vicki Mynott 150 years Richlands, Inala & Neighbouring Suburbs in Brisbane’s South West p134

⁷ <http://tafesouthwest.edu.au/about-us/locations/inala/#.WN2LVbjoyZk> downloaded April 2017

⁸ <http://statements.qld.gov.au/Statement/2017/1/24/inala-tafe-doubles-in-size-to-help-job-seekers-and-new-arrivals>

Premier Anastacia Palaszczuk said the expansion was necessary to meet the increased demand for English classes for migrants and refugees and training for job seekers.

“This expansion will benefit not only TAFE Queensland and its students but also the wider Inala community and local businesses and residents,” Ms Palaszczuk said.

“Education and training is a priority for the Palaszczuk Government and this is real-life learning, getting our migrant and refugee residents ready for meaningful employment.”

Minister for Training and Skills Yvette D’Ath said the campus had experienced significant growth in student numbers and training activity since 2012.

“This is primarily due to high and growing demand in the number of migrant settlements and access to Commonwealth-funded training programs such as the Adult Migrant English Program and Skills for Education and Employment,” Mrs D’Ath said.’

Aboriginal Studies

Inala Elders Aboriginal and Torres Strait Islander Corporation has been based at 91 Poinsettia Street, since the Bremer TAFE facilities closed in 1999.⁹

This organization is a place for indigenous people to gather to learn, listen and laugh together while maintaining the important cultural aspect of the elder mentoring system. They currently provide a CACPs program to endeavor to keep our elderly local people living safely and comfortably in their own homes longer. The organisation is especially focused on the needs of the older indigenous person within their home and community participating in talks/meetings with local, state or federal governments. Mentoring being another major focus for them; successfully for 5 years coordinating a youth festival that has been recognized as the biggest indigenous youth festival in Queensland’.¹⁰

The Ngutana-Lui Aboriginal and Torres Strait Islander Cultural Studies Centre:

⁹ Vicki Mynott 150 years Richlands, Inala & Neighbouring Suburbs in Brisbane’s South West p134

¹⁰https://www.mycommunitydirectory.com.au/Queensland/Brisbane/Aboriginal_Services/General_Aboriginal_Service/s/103969/Inala_Elders_Aboriginal_and_Torres_Strait_Islander_Corporation



2018 photo

‘The Ngutana-Lui Aboriginal and Torres Strait Islander Cultural Studies Centre was established in 1989 by Brisbane Catholic Education in conjunction with the Aboriginal and Islander Catholic Council and the local community. The Centre is located in the Moreton Region about 15 kilometres south west of Brisbane in the grounds of St Mark’s Parish, Inala.

‘The aims of the Centre are to promote reconciliation, through education and to develop and enhance cultural knowledge, understanding and respect for Aboriginal and Torres Strait Islander people. The philosophy of the centre is based on a holistic view of creation, recognizing that humanity is part of the environment and not separate to it.

‘A relaxed, friendly atmosphere was created to express teaching / learning styles, which reflect Aboriginal and Torres Strait Islander perspectives, providing opportunities for teachers and students to explore aspects of both traditional and contemporary Aboriginal and Torres Strait Islander societies.’¹¹

¹¹ Ngcc.qld.edu.au accessed July 2017

Other Community Buildings

Inala BCC Library Rosemary Street



*Inala Library.*¹²

The very first library in Inala was organised by the Inala & Districts Boys' and Girls' Clubs Association and was reserved for members. It was held at a home at 62 Buddleia Street from 1958.

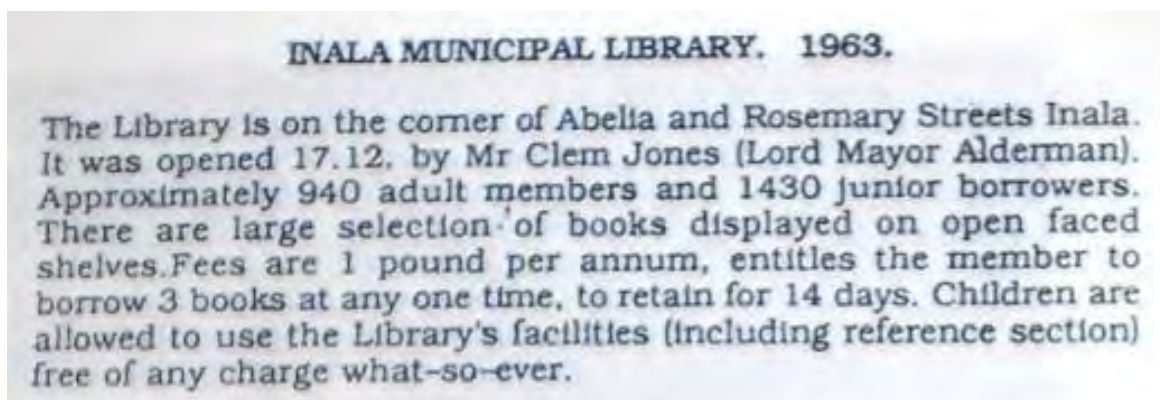
In 1963 Brisbane City Council allocated funding of £20 000 for the construction of a library in parkland on Rosemary Street. A brief description of the building is given in the approval.¹³

Brisbane City Council mayor Clem Jones opened the new £26 000 Library building on Rosemary Street on 18 December 1963. Council had considered various sites including at the Civic Centre but were told by the Housing Commission that sites there were reserved for 'high paying' commercial businesses. In the end they chose a piece of parkland on a main

¹² Brisimages 1978

¹³ BCC Council minutes 1962-63 minute 1051.

road near to the centre of population at that time, on the corner of Abelia Street. There was a \$2 per annum charge for 5 books and 1 magazine at a time – children free.¹⁴



15

Because a new library was opened at Civic in 1993 the building is now referred to as the ‘old library building’ or the ‘old Inala hall’.¹⁶ The murals on the wall were painted by Mr Les McDonough.¹⁷



‘Old Library Hall’ now used as a community centre 2016.

¹⁴ *Inala News* Feb 1964 –Aug 67 (hard copy JOL)

¹⁵ *Inala our suburb: A Publication of Memories To Commemorate The Opening of The New Inala Library* 1994 Riley G

¹⁶ *Inala Library* establishment 1962 File BCA 1834/2152

¹⁷ Riley G *What Inala means to me* 1999. *150 Years* V. Mynott p 140

Inala (now Western District) Court House (Richlands)



Court House 1965 QSA image 14047

The Court House opened 2/12/1965.¹⁸

Police Station

Police.—The Police Department is to be congratulated on the up-to-date Police Station, which is situated at Hyacinth Street. It is well cared for and of pleasing design.

The staff consists of one Sergeant (second class) and three Constables, and regular patrols of the area are made.

¹⁸ *Inala News* Feb 1964 –Aug 67 (hard copy JOL)

¹⁹ *Inala – a City within a City* H Carter P919.431 JOL



C2
3292

POW.D. Inala Police Station Aug. 59

Police station 1959 QSA image 6794

The following photographs of the Police Station and Courthouse on the corner of Hyacinth, Jonquil and Burdock streets taken in 2018:





Elizabeth Bruce Hall

The playground site (bounded by Bamboo, Robina and Japonica Streets) was drained and levelled for the playground and a substantial public hall erected at the cost of £10,700.²⁰ (In 1960)

The following photographs were taken in 2018:

²⁰ information provided by Lesley Eason.





PLAYGROUND ASSOCIATION INALA COMMITTEE

Well at last the playground is a reality. After many hold ups the land bounded by Bamboo, Robina and Japonica Streets is being drained, levelled, and a public hall costing £10,700 is under construction.

It will have a dance hall, supper room, kitchen, two meeting rooms, and will have a fully-equipped library for children. The hall will be available for letting.

Finishing date for the building is the 4th December, and we hope to have part of the playground ready for the school holidays.

Last month 40 people, representing 29 organisations in Inala, elected a local committee to look after the interests of this £20,000 project.

Office-bearers elected are:

President, Mr. H. Cranney; Vice-Presidents, Mr. W. Forbes, Mr. D. Echert; Hon. Treasurer, Mr. J. Osborne; Hon. Secretary, Mr. Allan Goss, 89 Aza'ea Street, Inala; Executive Officers, Mrs. J. Shelley, Mrs. E. Baker, Mr. J. Todd, Mr. A. Fenn.

You'll be hearing more about the Playground and Recreation Association in the near future.

ALLAN GOSS,
Hon. Secretary.

21

²¹ Riley G Inala our suburb: a publication of memories to commemorate the opening of the new Inala library 1994

Parks

75.5 acres of land have been set aside for Parks by the Housing Commission.

The Elizabeth Bruce Playground, which fronts Japonica, Bamboo, and Robina Streets, Inala Heights, is named after the Vice-President of the Playground and Recreation Association of Queensland, Mrs. H. A. Bruce. This playground was officially opened on November 26, 1960, by His Excellency Sir Henry Abel Smith, who was accompanied by Lady May.

The cost of the hall, fence, mobile equipment and ground preparation was approximately £15,500. In addition to this, all fixed equipment was provided by the Brisbane City Council. The cost of maintaining the playground is over £2,000 per annum.

It is open daily, except on Good Friday, Christmas Day and Anzac Day. The hours are: Week-days, 10.00 a.m., and Sundays, 2.00 p.m.

Two supervisors are always on duty catering for approximately 1,500

children per month, conducting games and coaching children in various sports. There is a Boys' Club for boxing and gymnastics, a games room for table tennis and other activities, as well as a library for reading and board games. These provide recreation for young and old alike. The formation of a Glee' Choir has proved popular and regular practices are held every Friday afternoon. When sufficient funds are available, three tennis courts will be built on a site reserved within the playground.

In presenting this picture of the ACCENT ON YOUTH in Inala, the part played by the Churches to influence Youth cannot be overlooked.

Regular Church Services, Sunday Schools, Youth Clubs, and varied sporting fixtures sponsored by the Churches have played, and are playing, a very important part in helping to give young people a better appreciation of true spiritual values.

Credit is also due to the part played by the Boy Scouts and Girl Guide groups and their leaders.

22

New hall at Inala in April

A NEW £11,000 hall in Japonica Street, Inala, built by the Playground and Recreation Association, will be ready for community use from April 1.

Association president (Mr. Justice Matthews) announced this yesterday when he received a £3208 cheque from Courier-Mail readers.

The money was contributed through the paper's Find-the-Ball competition.

The cheque was presented to Mr. Justice Matthews by The Courier-Mail and The Sunday Mail Editor-in-Chief (Mr. T. C. Bray).

£17,000 Plan
Mr. Justice Matthews

Bray).

£17,000 Plan

Mr. Justice Matthews said all the money would be used to meet final costs of the hall, which would have general accommodation for 300 people, library, games room, supervisors' office.

The hall was a part of a £17,000 community scheme on a three-acre centre which would have football and basketball fields, three tennis courts, a children's play area. It would all be completed in time for an official opening in May.

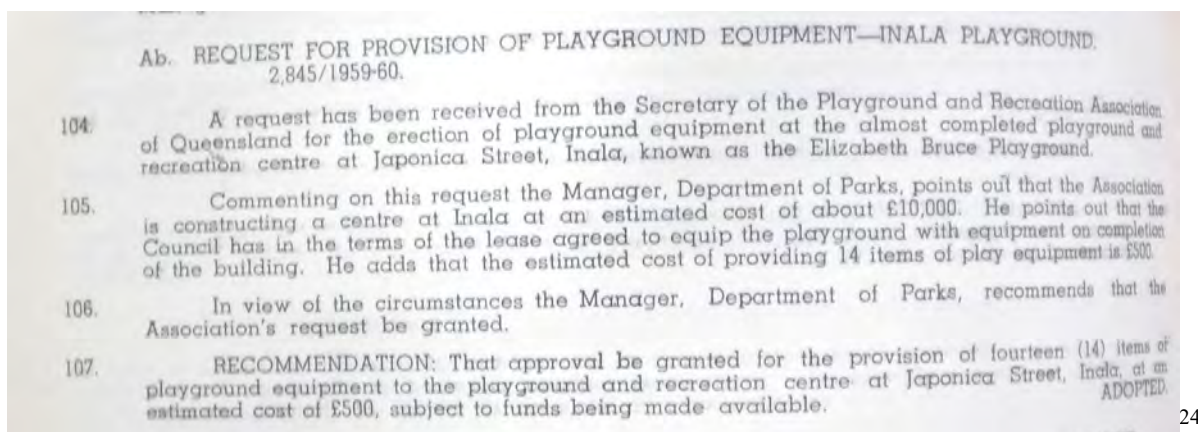
Planned for the welfare of young people throughout Inala, the centre would be named the Elizabeth Bruce, after the widow of Mr. H. A. Bruce, former Queensland Education Minister and Works Minister.

Handing over the cheque, Mr. Bray said Courier-Mail readers knew the money would be used for young people who needed it. Inala deserved as much help as could be given.

COURIER MAIL 4 MARCH 1960

23

²² Inala – a City within a City H Carter P919.431 JOL



Scout Hall Archerfield Rd near Littleton Rd²⁵



<https://screenshots.firefox.com/2ItHgnVsJOaCAtYU/www.facebook.com>

1st Inala Girl Guide's Hut 63 Lilac Street 1962

After 1987 Gert Riley wrote *The History of Guiding in Inala* a wonderful and complete history.²⁷

²³ Inala Library CD IFL3

²⁴ BCC Council minutes 1959-60 p 900

²⁵ Riley G Some more history of our Inala and Suburbs 1994 front cover

²⁶ Inala Library CD IHD 12

²⁷ G Riley *The History of Guiding in Inala* courtesy of Angela Naumann RISHG

The following is from G Riley *History of our Inala and suburbs* 1988 ... p.30

30



To The Inala Historian

You may be interested in some trivia associated with the giant fig tree that is growing on the street adjacent to the Serviceton Guide Hut at Wonga St, Inala.

As the leader of the 1st Serviceton Brownie Pack during 1978, (I was known as "Miriki" the "Little Owl") I had arranged to test four Brownies for their gardening badges where the girls were to demonstrate, over time, that they could plant and nurture young trees.

Eight young trees were donated to the pack by the Queensland Department of Forestry, Salisbury which were planted out by the Brownies. Upon reflection, we did not know what species we were planting and little understood how big these trees could grow. It is just as well that only one survived!

I must say the surviving tree is a magnificent specimen and compliments the area. It is through little projects such as these, often unnoticed, that people contribute something worthwhile to the place in which we live.

I offer you this snippet of information only so that if, in some future generation someone wondered how on earth such a tree were planted, the answer may be recorded somewhere for posterity.

LAWRENCE SYLVESTERS BUTCHER SHOP

13

Mr. L. Sylvester opened the first Butcher Shop in Biota St. Inala on 23rd. December 1953.

It was leased (or sold) in 1963. Then George decided to follow his Dad's footsteps and took over the shop. Much to the delight of his Dad.

Now there is Graham, George's son also in the shop. Three generations in the one shop.

They must be doing something right to have stayed there so long.

They have always been kind and generous to their customers, and to various Clubs and organizations.

Their gifts of meat trays were always the great attraction at the Cent Auctions, especially in Guiding, back in those early days.

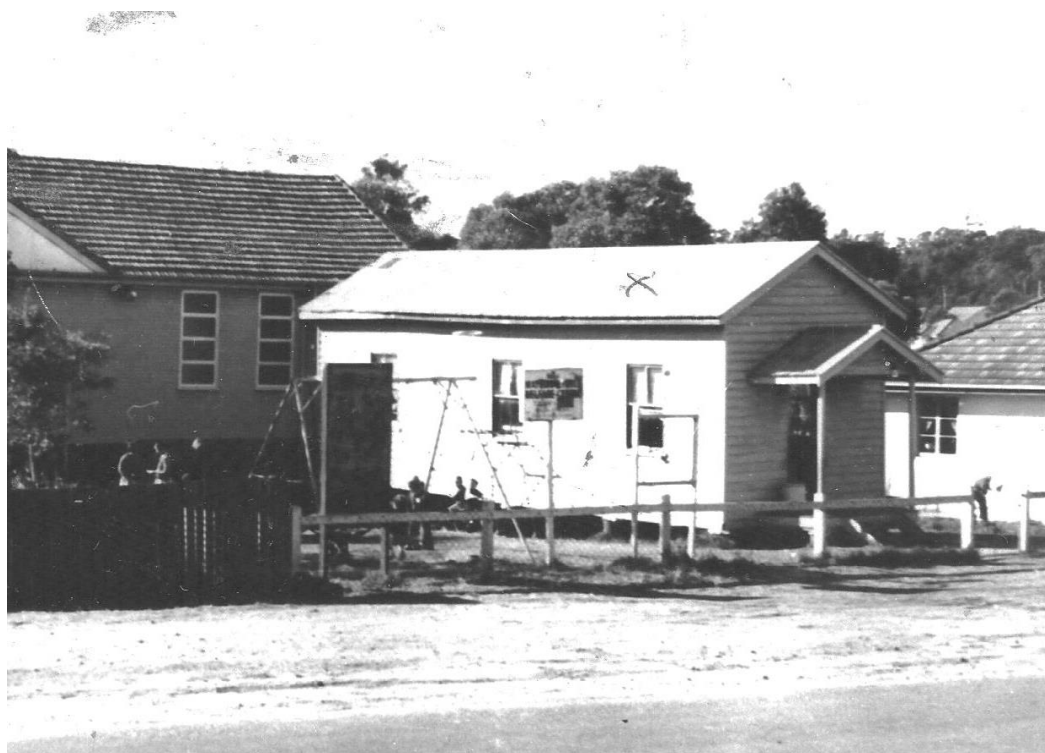
I'LL say "Thank You " to you all again and lets hope for another generation of "Sylvesters" in the Biota St, Butchers Shop.

28

²⁸ Riley G Some more history of our Inala and Suburbs 1994 P13

The Methodist Church Hall was moved from its Archerfield Road site in 1962 to 2.2 perches of parkland leased from the Housing Commission in Lilac Street for use as the 1st Inala Girl Guides Hut. In 1961 the Guides were authorized by Council to continue to operate with an Earth Closet rather than a costly septic tank. In both 1969 and 1977 the BCC gave permission for the construction of an extension to the hut.²⁹

By 1993 it was being used as the War Veterans Advisory Service.³⁰



The first Guide Hut, previously the Methodist Church in Archerfield Rd as shown here.³¹

Community House

‘Inala Community House was formed in 1966 by the combined Presbyterian, Congregational and Methodist churches. ICH was inspired by the Wayside Chapel in Sydney’s Kings Cross. It was founded not to promote religion but to provide support for those in need in the community.’

²⁹ BCC Council minutes 1961-61 minute 2079; BCCA Survey and Land Record

³⁰ Riley G Some more history of our Inala and Suburbs 1994 p.1 and 16

³¹ Riley G History of our Inala and suburbs 1988

INALA COMMUNITY HOUSE.

It is basically a Community Hall with Offices attached where the administration of the Agency is carried out.

The formation of the Agency was led by Rev. Brian Whitlock and a group of people who met each week for a period of prayer and discussion at a meeting called "Christian Encounter "

A building programme was under way proceeding to erect a Church Hall on Methodist ground, but with the Presbyterian Church, Rev Brian Gilmour, and the Congregational Church amalgamating with the Methodist to form a Co-operative Parish, volunteers to help build the Church were drawn from all three.

After nearly 18 months of consistent hard work the building was completed and opened October 15th 1966, by the Member of the State House, Mr. Doug Sherrington. It was decided that the building would not bear any Church title. Hence the name.. Inala Community House.

This extract was from a story given to me by Michelle Meridith. (Administator) *S.J.L. G.J.R.*

32

³² Riley G Inala our suburb: a publication of memories to commemorate the opening of the new Inala library 1994 p 22

Wallpaper
Color Centre
 INALA FURNITURE
 and
 APP. STORE
 CIVIC CENTRE
 372 1887

INALA JOURNAL

Printed by Roel Printing Service, for A. & N. Goss Publishing
 Distribution Areas: Inala and surrounding areas
 VOL. 8, ISSUE No. 3
 WEDNESDAY, 20th SEPTEMBER 1977

Local Theatre

"Time, Murderer, Please" a three act thriller written by Raymond Dyer, will be the Inala Theatrical Society's next production.

The action of this comedy takes place in an hotel in Hornsey, London, called "The Round Table" owned by the Dugdales. Whilist "Duggie" likes a quiet drink and a game of darts with his customers, Mrs. D. rules the roost.

Sadie, the cockney barmaid is in charge of the Saloon Bar, and her boy friend is George, the local Bobby.

Grannie and Irma are "regulars", Grannie is a bit deaf, and hates coppers, Irma is a spinster with a permanent cold, she also has her eye on George. Boarders at "The Round Table" are Mr. Brooks, an Insurance Salesman, Freddie Windle, who travels in clocks and watches, and Pat, the attractive niece of the Dugdales.

Into this hotel comes Mike, a bewildered young man, who is he? and what is he doing here?

Come and see this comedy thriller and find out at the Inala State Primary School Hall, Rosemary Street, at 8.00 p.m. on Friday, 23rd September, Saturday, 24th September, Friday 30th September and Saturday, 1st October.

Price of admission is \$1.50 for Adults and 50c for children, pensions and students.

Reg. TAX AGENT

Allan W. Marshall
 AASA, AAUD
 52 Highfield Street,
 Durack (Oxley Stl.)
 All Classes of Returns
 Phone 372 1197
 Also Weekend & Evenings by appointment

J. & E. BARABAS Upholsterers

RECOVERING LOUNGE SUITES
 DINING & PATIO SUITES
 FREE QUOTES WORK GUARANTEED
 Phone Anytime 372 4814

RING FOR THE GIRLS !!
K. T. ANT-E-PEST
 92 ROSELLA STREET, INALA
 TEL.: 372 2415

HOME TREATMENT
 • COCKROACHES
 • SILVERFISH
 • ANTS

12 MONTHS SERVICE (with a smile) GUARANTEE
 24 Hour Service DISTANCE NO OBJECT

INALA COMMUNITY HOUSE

How would you like to eat Indian Curry, Spanish Paella, German Strudel, Greek Moussaka or Italian Ravioli? If so, you can taste these exotic foods, and see the people who cooked them, dressed, in their national costumes at the Annual General Meeting of Inala Community House to be held at Community House on Monday, 10th October, 1977 at 7.30 p.m.

Migrant of many different nationalities live in Inala and they have brought with them various aspects of their unique cultures. Food, how it is cooked and prepared is one example of how nationalities can differ. Everyone is interested in meeting new people and the traditional "breaking of bread" has through the ages been a way of communicating, and getting to know one another. At this meeting, not only will you be able to taste foods you have never tried before, but you will also be able to talk to people from whence this food has come.

Community House has always tried to provide a bridge between the differing facets which make up the Inala community, be it between members of a family, residents in a street or differing nationalities in a community. This year, the Annual General Meeting at Community House will provide another opportunity for these groups to get together in an informal way to learn more about the community in which they live and a little about the different cultures which are represented in the Inala area.

The Honourable John

Herbert, Minister for Community Welfare and Sport will be the Guest Speaker, and supper will take the form of an excursion through different countries of the world via their food. As you know Community House is a Family Welfare Agency whose services are orientated towards migrants, children and young people who are unemployed. A Counselling Service caters for the needs of all residents, 3 Day Care Centres provide expert care for children of working parents and others. Small groups of children are also cared for in approved homes and an emergency service for overnight care is available for children whose parents are experiencing extreme difficulties.

The latest project of Inala Community House is a scheme for young people who are out of work. The scheme is aimed at giving them confidence in their ability to find suitable work as well as involving them in skilled activities such as mechanics, welding, woodwork, typing and sewing. A disused factory in Rudd Street provides the young people with a centre of their own.

Other services in which Community House is involved are legal assistance through the Legal Assistance Committee which operates from Community House every Tuesday evening and Friday morning, volunteer welfare workers, and a community crafts group which meets weekly and is available for all those people wanting to learn a new craft free of charge.

Inala Community House is governed by a board of sixteen people from the Inala area.

So come and have fun with us - we would like to meet you and tell you about some of the things that Community House is doing.

WELCOME

The Inala Corp. of the St. John Ambulance Brigade, are very honoured to have Dr. P. Loth join their ranks as Corp. Surgeon.

Dr. P. Loth, who has a general practice in the Inala area has, in the past year conducted all the first aid exams for the Serviceton Adult Division. In addition on several occasions he has given lectures to members of the division.

The Serviceton Adult Division, will be commencing a first aid course on Monday, October 3rd in the new Inala Community Centre. The examining officer for the course will be Dr. P. Loth. For any enquiries regarding the course or work of the division please ring Div. Supt. Mr. K. Parker, on 372 3862.

POLLUTION PETITION

On Tuesday last, the Member for Wolston, Mr. Evan Marginson, M.L.A., presented a petition to the Queensland Parliament pointing out the pollution and dust problems affecting the residents of the suburbs of Darra, Oxley and Jamboree Heights.

After presenting the petition, Mr. Marginson said that 1,002 people in these suburbs had signed the petition which was handed to him by Mr. Mike Kinnane who is the Australian Labor Party candidate for

Government in the hope that this problem would be eliminated.

PAK
 Deliveries
 Delivered

Inala M
 INALA

Brothers League
 Coming Event

We would like to guests that the seven days a week a.m. to 2.30 p.m.

Week-End Sports
 Friday and Saturday now introduced the Family - P Australian or C \$3.50 all inclusive

LADIES
 The next Ladies Thursday, 20th bly plus entertain

SPORTS
 We are trying to have a Top Austral to come along Watch for the Board.

PENSIONERS
 The Board of Dis pleasure in announce for all pensioners 12.00 at nominal price of 5th October, 1977

COMMUNITY HOUSE (Cont).

27

A Child Minding Centre operated by Mrs. M. Robinson was conducted from 1966, when Community House first opened, until the lease expired in 1972.

The late Mrs. Marie Robinson was also operating two other Child Minding Centres. One (opened in the late months of 1954) on the corner of Archerfield Rd. and Magnolia St. (in Methodist Church Grounds.). and the other at the corner of Lilac St. and Magnolia St.

The first Social Worker was Mrs. Jean Brewer. Mrs Brewer was responsible for many submissions to the Government Agencies on the needs of Inala

A Memorial Library was set up for the late John Moroney (the first treasurer). Later the Books were donated to the Inala Library for the use of the Community.

The first Community Guide was printed in 1972.

Mrs. Phyllis Leonard was employed as full time secretary after months of voluntary services.

When the leases for the three Commercial Child Minding Centres expired on 31.12.72. Inala Community House took them over. Community House applied for Capital and Recurrent Grants, and also Subsidies for children in need.

Approval was granted to erect two new centres and to renovate a third one.

The two new Centres were Aspen St. and Swallow St Inala. (They now operate with their own Committee).

The third one was at the corner of Magnolia and Lilac Sts., and was originally owned by Dr. Whyte, who used it for a Surgery in the front part, and a Child minding Centre at the rear of the building.

Mrs Shirley Tucker was then employed as Administrator.

The Methodist Church decided to sell the property and Community House did not have the money to buy it, so an approach was made to the Brisbane City Council to purchase the building to allow the Agency to continue its work. The Council agreed and a lease was signed with Community House.

The Centre at the corner of Magnolia St. has also been sold.

A great deal of work has been done by the Agency for children in all types of services, Pre-School, Day Care, Before and After School care and Crisis Care. A lot has also been done for teenagers and adults in various ways, teaching, caring, helping, and entertainment

For the Non English Speaking Families and New Settlers in the area, the Staff of Community House have always been ready to assist.

Taken from some of the History Books given to me by Michelle Meredith.

here to help everyone of all ages and cultures.

"One of our main services and most popular services is family day care," Mr Paul said.

"That first began in 1975 and that is known as My Place Family Daycare.

"We have 800 children currently in care with our 600 parents and 112 educators, so that is a large service.

"We work very closely with Family Day Care Queensland and the regulators. We are a very high quality service and we pride ourselves on that.

"So the original family day care was started in 1975 and after that we started another one in Goodna, but we have now merged them together and we have children coming from all over."

In addition to their family day care, they also have a number of other services

which are here to help lead a hand.

"We have a number of big programs at the moment and lots of smaller programs," Mr Paul said.

"One of the services is family services, which runs the out of home care, which is the foster care program.

"We also have a family intervention service which is working with families who are having difficulties and we try to make sure those families don't fall apart.

"In the family services component, we are looking to expand into a revised mentoring program for carers who need additional support and also a domestic violence program in partnership with another of our programs.

"Another program is our community engagement.

"Under this we have the

We have 800 children currently in care with our 600 parents and 112 educators, so that is a large service.

— Ross Paul

Acacia Ridge 50 and Better program which is where we work with older people, providing activities to prevent social isolation.

"We also have a 60 and Better program in Skylark St, Inala.

"Then we have a community engagement program, which works with all the other programs around here and supports people directly to help them get engaged with what ever they need for community support.

"We also have a

community settlement program, which is a federally funded program, and that provides support to migrants."

While that may seem like a lot, it's not the final number.

The services they provide don't end there.

Inala Community House also provides emergency assistance, a homework club, a program to give young people a voice through photography, musical morning teas, Mater prenatal care, employment.

AND SKILLS PARTICIPATING session, exercises classes and more.

Mr Paul said it was essential to have programs and partnerships with other organisations within Inala to make sure everyone can receive the help they need.

"We work closely with other organisations to make sure that our clients, and other clients that are coming through the door, are well serviced and can properly integrate into the community," he said.

If you or someone you know would like to know more about signing up for a program at Inala Community House, contact them today on 3372 1711 or visit them at 38 Sittella St, Inala. You can also view their website at www.ich.org.au.

Here to lend a hand

Community house offers a wide range of services for the Inala community

Ashleigh Howarth
Ashleigh.Howarth@qten.com.au

INALA Community House has been providing support to residents in the western suburbs for close to five decades.

They first began operating in 1966 at their Sittella St office, where they can still be found today.

However, they have expanded to have a couple of buildings around Inala, as well as Acacia Ridge.

But sadly, not everyone in the western corridor knows about all the services they provide.

Inala Community House managing director Ross Paul explains how his 42 dedicated full-time and part-time staff, as well as their many volunteers, are here to help everyone of all ages and cultures.

"One of our main services and most popular services is family day care," Mr Paul said.

"That first began in 1975



DIVERSITY IS FIRST: Managing director of Inala Community House is Ross Paul.
PHOTO: INGA WILLIAMS

Meet the leader

ROSS Paul is the managing director of Inala Community House.

"I have been here since January 2015. I have been on the board since 2013," Mr Paul said.

"Before that I was in the finance industry. I ran a boutique finance company.

"And prior to that I was overseas. I worked for World Bank in the US and development countries.

"I have also worked in Canberra for the Federal Government."

But it is his role at Inala Community House that he really enjoys.



HERE TO HELP: The staff of Inala Community House.

which are here to help lend a hand.

"We have a number of big programs at the moment and lots of smaller

PHOTO: INGA WILLIAMS

and skills programs, a craft session, exercises classes and more.

Mr Paul said it was essential to have programs

We have 800 children currently in care with our 600 parents and 112 educators. so that is a large

MEALS ON WHEELS.

Flo Smith, the first Secretary has left the District, but still returns to the Annual meetings and Dinners. Joan Musch was the first Treasurer. At the Annual Dinner August 1987, Appreciation Awards were made to Mrs Higgins, Mrs Musch, Mrs J. Swotten, and a life Membership was given to Flo Smith, who at the age of eighty was very pleased to receive the Award.

Meals on Wheels started in St Hugh's Anglican Church, then transferred to Methodist Church in Berrington Street, which was a bit bigger as they decided more space. We now have land and we hope to start operating from our own building (next door to Community Health centre) in 1988. At the time we have two cooks and about six people each day to help with this service, they deliver to 40 odd people (approx) a day. Dr. Loth and Molly Wells were instrumental in starting Meals on Wheels, which is certainly a dedicated job, by people who care. May Mallory was one of the earlier Cooks.

The present office bearers are, President May Marriot, Secretary Joan Peilley, Treasurer Jane Tucker.

INALA MUSICAL MORNING TEA

In 1978 there was a small welfare committee attached to Inala Community House. Three of the members were Shirley Tucker, Jean Brewer and Julie Wilkie. The latter was helping with Meals on Wheels and reported that while the people she attended had "Meals", Blue Nurses, Home Help, etc., they were still in need of someone to talk to.

It was decided to try to establish some sort of morning tea group, with perhaps some old time singing for about six people. A Social Work student named Frank Forrest, was placed at Community House about this time, and was very keen and helpful. We found a pianist, Mrs. Hazel Hose, and were allowed to use St. Hugh's hall to see how it would work. The Blue Nurses spread the word, and on our first day we had 22 guests.

Access was a problem, so the Uniting Church gave us the use of their hall, where we met for several years. Mrs Vi Chadwick travelled from Camp Hill to help with piano playing, and took

over as pianist on the death of Mrs. Hose. She continues to play for us with the support of Mrs. Dora Kelly.

As our numbers grew and aged, we again found steps were a problem - also a very hot summer forced us to seek a hall with fans. We moved to Inala Community House which has become "home" to us.

We have celebrated our 9th Birthday, and our numbers are as high as eighty on some days. Transport is always a problem, and we use Community House bus paying for the petrol only. Mr. Bill Strathdee is bus driver, audio expert and leads the singing, plays his mouth organ and is "Best Friend" to all. Thank you Bill.

We have a willing band of volunteers who make the eats, pour the teas, run the raffles, pay our bills, act as drivers, and talk!!! Special thanks to Herman and Val Ruyters for a terrific job as drivers, but a transfer to a Church in Mt. Isa, will see us desperately seeking help to bring our members in when we resume in early February. We have some great supporters who provide us with entertainment each year: Glenis Beaman, Denise Hobbs, Margaret Loon, Gumdale Merry Makers, John McSweeney, Bill Maskiel, Excelsiors, to name a few. Best of all our members are always willing to entertain their friends; Wally Sindden will sing every day (if we let him) thanks Wally.

We have no outside funding so raise our running costs with a raffle table and cent auctions. We pay 50c for morning tea and 50c towards petrol costs. Our members support us in any fund raising event we have, as it is our group. Reluctantly, we may have to ask the more able bodied members to find their own transport in the new year, but know they understand our difficulties.

It has been a pleasure to be Co-ordinator for the past nine (9) years, especially with the help and support given by Mrs. Shirley Tucker, her Staff and Inala Community House.

Regards,
Julie Wilkie.

Police and Citizens Youth Club



1978 aerial photograph from Sunday Mail 13 August 1978 showing PCYC building

Sheltered Workshop?’ 152 Freeman Road Inala

In 1959 Mr Greenstead received approval from BCC to establish 3 tennis courts on land at 152 Freeman Road and in 1960 to make them night tennis courts, although there is little if any sign of courts on aerial photos of the time.³³ The land of nearly three acres, with a drainage easement diagonally across the site, but possibly without any development of tennis courts having been done was purchased by John Patrick Cahill in 1962, who then sold it in 1970 to ‘Industrial Therapy Units P/L’, who were granted approval to build a factory and offices on the site with later additions in 1974. It is probable that this was a ‘Sheltered Workshop’ for the disabled and possibly named ‘Gregory Place’ after one of the proponents.³⁴ In 1982 the property was purchased by the Uniting Church Property Trust.³⁵

It was reported that from 2010 until 2018 the Wesley Mission had provided the space rent-free to Rotary for a warehouse and packing shed for overseas donation programmes. The Mission terminated the agreement and put the land and building up for sale in May 2018.³⁶

It is understood the land was purchased by the nearby Citipointe Church in 2019.

³³ BCCA Survey and record of land index cards on microfilm.

³⁴ Emails Vicki Mynott, Helen Pollock, A Naumann Nov 2017

³⁵ Certificate of Title No 76152 Vol 3528 Folio 30

³⁶ South-West Satellite /Springfield News 23 May 2018 p5



Lower part of sign reads 'Proceeds to intellectually disabled persons'.



The initials RAWCS stand for 'Rotary Australia World Community Service'. 2018 Photos.

Durack Fitness and Sports Centre 26 Rosemary Street

Originally built as a sports centre the building is now the Churches of Christ - Citipointe Church Brisbane West.



Introducing

OFFER No. 1

TENNIS
or
SQUASH

COURT HIRE

\$4.00 PER HOUR
PER COURT

OFFER No. 2

GYM or CIRCUIT or
AEROBICS

CASUAL RATE

1/2 price \$3.00 per visit

HURRY OFFER ENDS 3/6/92

DURACK FITNESS & SPORT CENTRE

Rosemary St., Durack **372 3622**



Durack Tennis Centre 16 Rosemary Street




1983 QImagery photo showing the sports centre with tennis courts behind.


Durack Sports Centre 54 Serviceton Avenue


Austco Pty Ltd applied for Development Approval for this in 1980, which was objected to by Indoor Sporting Enterprises who operated the skating rink and sports centre close by.³⁷


It was advertised for sale in 2018:


SECURE INVESTMENT WITH DIVERSE INCOME STREAM
FOR SALE By Expressions of Interest closing Thursday 9 August at 4pm
58 DURELLA STREET, DURACK



 New 10 year child care lease

 5 year lease to Greencross Vets

 Tenants pay outgoings

 Prominent 1,728m²* corner site

James Marshall
0401 362 174

Philip O'Dwyer
0451 419 885

*Approx.
colliers.com.au/207969

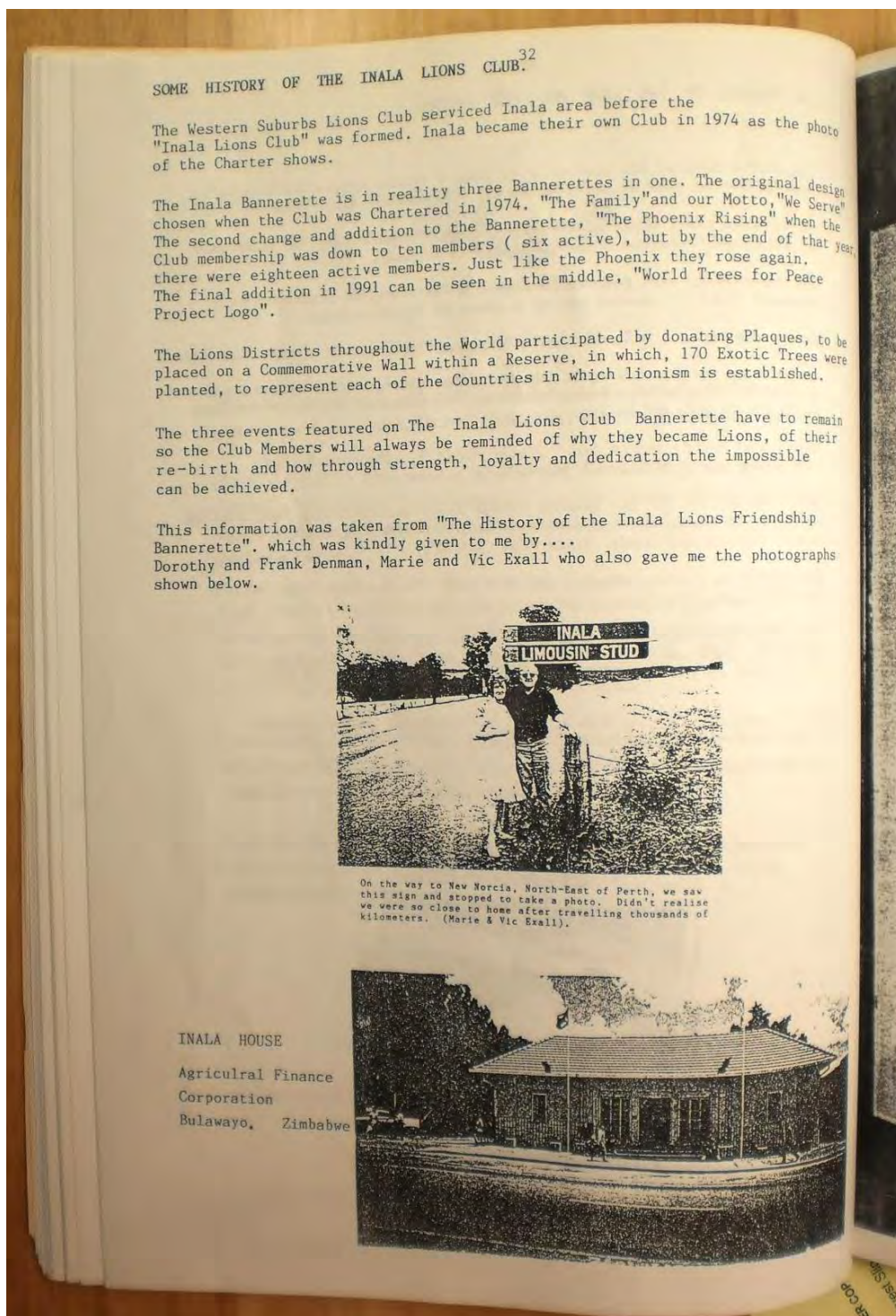
³⁷ Letter of objection –A Darbyshire.

Other Community Groups (References to further reading)

Lions Club

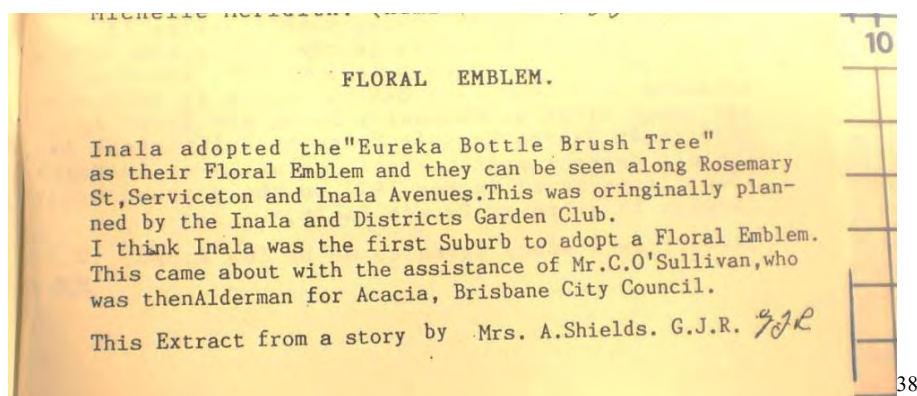
See 150 yrs p134

Lions: Riley G *Some more history of our Inala and suburbs* 1994



Garden Club

Riley G *History of our Inala and suburbs* 1988 for info about emblem



Indoor Bowls

P 71 Riley G *History of our Inala and suburbs* 1988 p 72

Inala musical morning tea

See image P72-73 Riley G *History of our Inala and suburbs* 1988 p 72

Senior citizens club

See image P74+ 75 Riley G *History of our Inala and suburbs* 1988 p 72

Red Cross

See image P74 Riley G *History of our Inala and suburbs* 1988 p 72

Inala Craft Group

P77 Riley G *History of our Inala and suburbs* 1988 p 72

Inala City united sports club inc and others

P77 Riley G *History of our Inala and suburbs* 1988 p 72 –

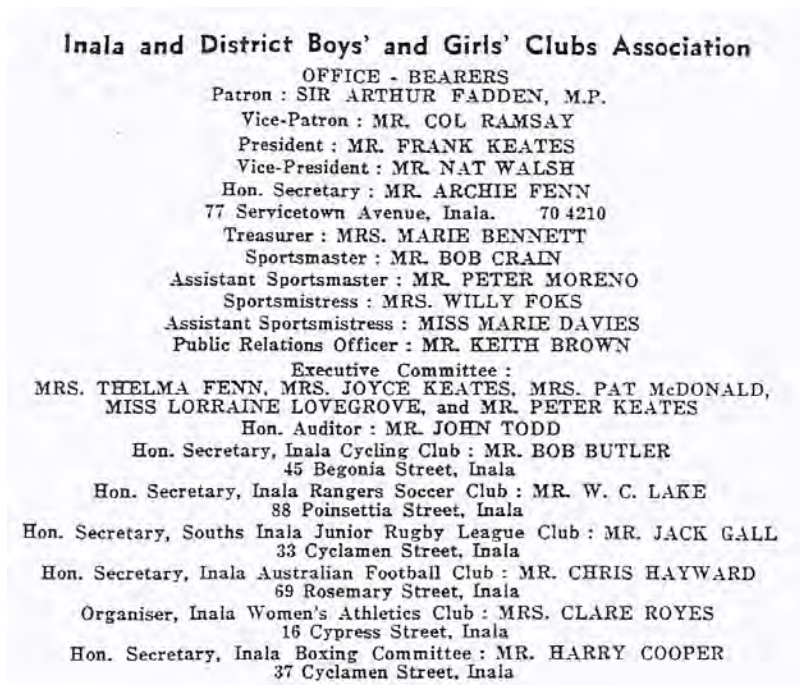
Apex

See *Satellite* 1968 p2

³⁸ Riley G Inala Our Suburb p22.

The Inala & District Boy's and Girl's Club's Association

The Association was formed in 1958 and for a while published *The Inala District Youth Gazette* with Vol. 1 No.1 dated June 1958.³⁹



Lapidary

See *Satellite* 1968 p2

Hollandia-Inala Club

See *Satellite* 1968 p6

Inala Ladies Ten pin bowling

See *Satellite* 1968 p7

Inala Theatrical Society

See *Satellite* 1968 p7

St John Ambulance Brigade

See *Satellite* 1968 p9

³⁹ RISHG collection

Community Art Gallery

See *150yrs* p139

Sports Oval Freeman Road

INALA 1964

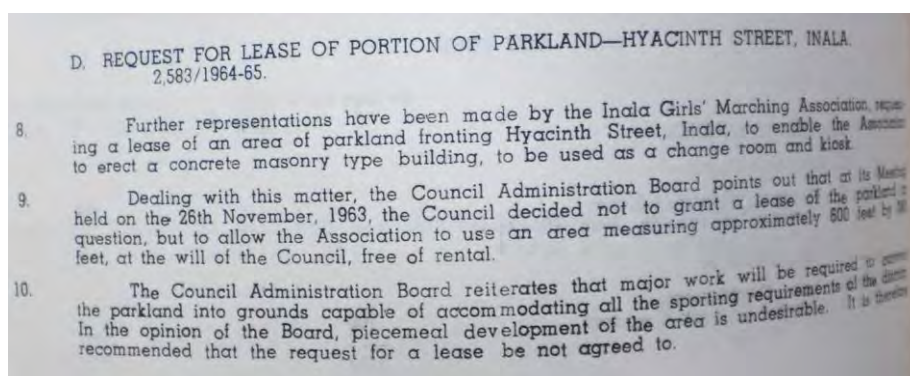
New Sports Facilities. Clearing work as commenced on the 40 acres of heavily timbered land at Freeman Road, which the Council has resumed for sporting ovals and recreational areas. The proposal is for six ovals, to include one Australian Rules, two Rugby League, one Soccer and two Hockey fields, with two turf wickets superimposed. Children's Playground equipment will be installed. The playing fields will be of immense benefit to school children at the Primary and High Schools in the area. At present most matches have to be played away because local facilities are not sufficient.

40

Inala Girls Marching Association

Marching competitions were popular in the 1950s and 60s –for further information see page 138 of Vicki Mynott *150 years Richlands, Inala & Neighbouring Suburbs in Brisbane's South West*

The Inala Bus Service reports taking the Inala Girls Marching Association – the *Alanies* to competitions in Caloundra and Toowoomba.⁴¹



BCC Council minutes 1964-65 minute 2583

One of the organisers of the Inala Alanies was Mick Chain, one of the original members of the Serviceton Cooperative Society in the 1940s. Other organizers were Bob Hitchens, Ken Jackson, and Mrs Burrows. One of a series of photos available follows.⁴²

⁴⁰ Riley G Inala our suburb: a publication of memories to commemorate the opening of the new Inala library 1994

⁴¹ Vicki Mynott *150 years Richlands, Inala & Neighbouring Suburbs in Brisbane's South West*, p36



⁴² A.Nauman collection

Tennis Club

Keith an ace at serving the community

IT'S 43 years since Keith Brown approached the parish priest at St. Mark's Catholic Church, Inala, with the idea of forming a tennis club.

Keith, an Inala resident since 1955, had met Terry McKenna who shared a mutual love of the game.

"We talked to Father Galley Lyons and he told us he'd help start a club if we raised money by selling lucky number tickets at the local shopping centre on Saturday mornings," said Keith.

"We did that. Father Lyons kept his word and two tennis courts were built beside the church and St Mark's tennis club was formed."

It was 1964, and Keith was the inaugural secretary and Terry McKenna the president. They still occupy the positions 43 years later, although Terry took a spell for 12 years midway through his term. Keith was also elected treasurer in 1965 and still wears that hat.

"Our club became so big we had to move to courts at Richlands after 12 years. We had almost 150 members after our third or fourth year," Keith said.

As a kid growing up in an era when unlit tennis courts were on the second corner of many Brisbane suburbs, Keith thought tennis "a risky game". But his three younger brothers and sister loved the game and his mother talked him into taking up the sport.

"I was about 20 and Mum said, 'all you do is chop wood and mow the grass. Go and take up tennis'," he said.

So Brown played - and loved, and played and played night up until his 18th birthday last year when he became ill and was diagnosed with cancer of the blood and a heart ailment.

Keith's heart came good, but his legs gave out and he's battling on with a walking frame and wheelchair.



MEMORIES of a lifetime ... Inala tennis stalwart Keith Brown with some of his press clippings. Picture: Philip Norrish

"Until I got sick last September, I was playing twice a week and sometimes three times," he said. "I played social tennis on Thursdays and mixed doubles in the division two Catholic competition on Sundays."

"I was devastated when I was first diagnosed, but I hope to be strong enough to run a tournament involving the four Inala tennis clubs just before Easter. God willing, I might be able to walk again."

"But if I can't, I'll just say 'I can't play tennis anymore. I won't be defeatist - I'm very fortunate to still be involved with the club.'"

"My life has been centred around young people and I'm proud so many have come through St Mark's and enjoyed tennis."

A bachelor, Keith's lifelong love of tennis has enabled him to see some of the greatest players to grace the court.

"The late Pancho Gonzalez was my favourite. I watched him play Ken Rosewall in a fabulous match at Milton one night," he said. "They went on the court at eight o'clock and it was almost one in the morning when Gonzalez won."

"I'm a great admirer of Rod Laver, and Pat Rafter personified everything good in the game. Roger Federer is a wonderful player and role model ... sadly, McEnroe and Connors did not fit the latter category."

Brown, who was honorary

tennis writer for the Catholic Leader and phoned results and stories to most media outlets in Brisbane and Ipswich for 40 years, is immensely proud of his involvement with the Inala community.

"I don't think there is anywhere in Australia that has more multiculturalism," he said. "We have 77 recognised languages and dialects registered in this suburb."

"At St Mark's tennis club we have three or four multicultural programs a year. Some of the Asian kids are among our best juniors. Multiculturalism is alive and well in Inala."

A retired boilermaker from Queensland Rail, Keith was a union organizer for 42 years and is a life member of the ALP. He was also awarded the Australian Sports Medal in 2000 for services to tennis in the community.

"I'm a working man from a working-class suburb and have always been a staunch unionist," he said.

"Unfortunately, there's a lot of young people who don't understand how hard our forebears fought for the conditions we enjoy today. Showing solidarity with your mates always brings rewards."

On Sunday, March 18, the Inala community will honour Keith Brown with a testimonial barbecue at West Brisbane Tennis Centre, Richlands, from 1pm. Funds raised from the day will be used in the construction of a ramp for wheelchair access to Keith's residence.

Local state member Anastacia Palaszczak this week described him as "a true community champion".

And Keith has a message for all the kids who've enjoyed tennis at Inala over the past 43 years.

"I'm 76 years young and tell the kids 'in Australia's oldest recycled teenager'," he said.

The private courts at Richlands were later used by the St Marks tennis club:⁴³



This is how the West Brisbane Tennis Centre run by Jim Joyce started - as a poultry farm. Pictured is Joyce's niece, Hayley Joyce. Picture: ANDREW BRADSHAW. The surrounds.

Joyce proud of green oasis

TENNIS Ash Barty's home court stands the test of time despite progress

IT MAYBE a humble tennis cogitare, but it's where Australia's tennis No.1 Ash Barty learned her craft and where a legion of rising players dare to dream of tennis success.

This is the West Brisbane Tennis Centre started by Bill Joyce and continued on by his son Jim who still presides over the centre. Surrounded by industry, the five-court centre is a green oasis and Joyce is like a small-business farm-house owner who refused to sell his paradise despite encroaching businesses.

"This place has been built in. It is old but in it's heyday this place was pretty nice," Joyce said.

And it still is "nice" today. The grounds were originally a poultry farm run by Bill Joyce - and chickens still roam the grounds, while gardening produce is sold from a shed by the family.

"I had had poultry farms in Magill and Aspley, around that area," Jim said. "It goes right back. I worked on the farm when I first left school."

"Then he got out of all that and we were not interested in farming."

So Jim started the tennis centre which had just one court, an ant-bed court, first constructed decades ago.

"It (the ant-bed court) had no lighting and was for social Sundays," Joyce said.

Joyce's brother John, one of the best juniors in Australia before being injured in a car accident, trained on it.

"So my dad built two more tennis courts about 1990. They were dirt courts. Then around 1990 I was getting into coaching so I built two more courts."

"We have stayed a five-court centre."

Barty, who this week starts her Brisbane International campaign, is the centre's most famous junior but to this day the centre is a source of enjoyment and ambition for countless locals.

⁴³ South-West Satellite 9 January 2020 p.20

SERVICETON/INALA – BUILT ENVIRONMENT

9. PLACES OF WORSHIP

Research in 2017

This paper was written and presented in 2017 from research within the libraries of the Richlands Inala and Suburbs History Group and its members, together with external research by the writer. Individual places of worship – sometimes sponsored by neighbouring parishes – frequently start at somebody's house, or a rented facility, until there are sufficient individuals to raise enough funds to build a formal place of worship. Over time places of worship grow or decline, amalgamate, change names etc. This Paper attempts to gather general information from the public domain, but is not a complete study of each place of worship, and the individual organizations have not been approached.

The word 'Church' is strictly related to the Christian faith, whereas 'Places of Worship' is a term that covers all faiths. At the time of the establishment of Inala in the 1950s-1980s the word 'Church' was often intended to cover all 'Places of Worship', and where quoted below the joint interpretation is sometimes appropriate.

Inala originally was strictly the land developed by the Housing Commission, but in later years the formal boundary has been changed to encompass adjacent community facilities such as schools

This Paper gives an indication of the growth and change in places of worship since the 1930s, and by that indicates also the changing cultural profile of residents. The newer migrants from Vietnam and later the South Pacific have followed the practice of the first residents, establishing places of worship as the foundation of their communities. The Vietnamese in particular are now well established with about six vibrant places of worship. The Samoan and to a lesser extent the Tongan communities are not quite so firmly established, but together have about five places of worship.

Earliest Activity

Before the arrival of Europeans the area was inhabited by Aboriginal people of the Yerongpan Dialect of the Turrbal Language group. In recognition of this there is a Yerongpan Street in Richlands today.

Western religion was of course unknown before 1788, but Aborigines had ‘Dream time’ and Bora Rings:



‘The Aboriginal People’s Church- the Aboriginal Inland Mission Community Fellowship was associated with Baptist Church ...which (in Inala began its prayer meetings at the home of retired missionaries, Harry and Audrey Kleinschmidt in the 1970s)...⁴⁴

When the Richlands Estate began in the early 1930s, the nearest residential and service area, and the only public transport available was three miles away at Darra. That community already had Catholic, Anglican and Methodist churches, and some early residents of Richlands walked or cycled to Darra for worship. Those early churches supported the growth of new church communities in Richlands and later Inala. Darra also had a State School and a Catholic school. Darra was initially mainly an Anglo-Celtic community until after World War II when Dutch, Polish and other Europeans migrants arrived.⁴⁵

Worship began in the Richlands Estate at the new State School about 1934 when the Methodist Minister, Rev AA Mills, came in to give Religious Instruction and for a time an Anglican Sunday School was run under the School building.⁴⁶

In 1946 the Catholics in Richlands Estate were given part of the property of W F Murphy in Garden Road, corner of Pine Road. The congregation obtained a small army style hut which they used as a church until about 1949.⁴⁷

⁴⁴ G. Riley and Inala History Group, ‘*Richlands*, p. 28; Harry and Audrey Kleinschmidt interview with Sue Keays, 6 November 2000. *South-West Satellite* 27 June 2018.

⁴⁵ A Celebration of culture, a social history of Darra. Lesley Jenkins 2003

⁴⁶ Mynott V *Richlands State School 75 years* 2009 p xii, 10, 14, 24,30

⁴⁷ Clark Richlands Early History of the Development of the Suburb p 58; note from Fred Clark, A Naumann collection.

In 1946 the Serviceton Cooperative Society commissioned Architects Hennessey and Hennessey to prepare a Master Plan for a *Garden City* in the area to the east of Richlands for which they had options, east and south of Camp Darra with ‘emphasis placed on avenue effects with ornamental trees’.⁴⁸

A newspaper report concerning the Master Plan stated that provision had been made (in the 1200 acres) for ‘2000 homes, churches, schools, theatres, shops, parks, sporting ovals, swimming baths, playgrounds, child care centres, and other community needs’.⁴⁹ ‘Another unique development was to be a church green, now occupied by the Civic Centre. The green would have seen all of Inala’s churches placed in one large area of parkland...’⁵⁰

The first Queensland Housing Commission Master plan of Serviceton had the following areas noted:⁵¹

The area now occupied by the PCYC in Swallow Street was marked as ‘PRIMARY SCHOOL & CHURCH SITES’.

The area now partly occupied by St Mark’s Catholic Primary School, was marked ‘SECONDARY SCHOOL & CHURCH SITE’.

Worship actually began in Serviceton/Inala around 1947 when Robert Brown and his family started the first Methodist Sunday School in their temporary ex-army hut home at Camp Darra on Archerfield Road. Rev AA Mills came out from Brisbane with his family for the day.⁵² In 1949 the Methodists purchased/acquired a small ex-army hut from the Serviceton Cooperative Society and erected it as a Sunday School hall on 50 perches of Society land at 472 Archerfield Road (currently occupied by the Samoan Methodist Church).⁵³

In November 1955 the Queensland Congregational Church purchased an acre of land at 57 Poinsettia Street (near what became Richlands East High School).⁵⁴

In September 1956 The Corporation of the Synod of the Anglican Diocese of Brisbane purchased 1 acre and 8 perches of land at 105 Poinsettia Street;⁵⁵

⁴⁸ F Clark Vicki Mynott Serviceton The soldier settlement that became Inala RISHG 2013 p24

⁴⁹ *Sunday Mail* 26 May 1946 p3

⁵⁰ BCC Inala Library *Inala History CD-rom* I and FL 07 Unnamed newspaper cutting 8 February 1989

⁵¹ Riley G Some more history of our Inala 1994

⁵² F Clark, V Mynott, Serviceton The soldier settlement that became Inala p 61,63

⁵³ F Clark, V Mynott, Serviceton The soldier settlement that became Inala p 32

⁵⁴ Certificate of Title Vol 2195 Folio 40 resub 2 of sub 3 of Portion 47 Parish of Woogaroo.

The Inala Catholic Church began as the “Parish of the Divine Word” in a house opposite the current church (at 99 Lilac Street) in 1956, with the first church on the existing site consisting of two wooden huts which were blessed in 1958. The name changed to St Marks in 1961.⁵⁶

As Inala grew both traditional churches and those of other cultures grew illustrating the ever changing mix of residents over the last 70 years.

In 1988 it was noted:

‘Other thriving Protestant churches are the Inala Samoan Methodist Congregation, the Aboriginal People’s Church, the Aboriginal Inland Mission Community Fellowship (which began its prayer meetings at the home of retired missionaries, Harry and Audrey Kleinschmidt), the Good Shepherd Lutheran Church, the New Life Assembly and the Baptist Vietnam Church in Biota Road. ...Passers by today are intrigued by the Phap Quang Buddhist Temple on Blunder Road and the Phat Da Buddhist Temple in Deodor Street. The latter provides a place for Vietnamese Buddhists to maintain their religion and culture, with plans to build a retirement centre nearby. These are just some of the churches in the Inala area, their diversity reflecting the multi-ethnic backgrounds of their congregations. The churches also serve as key centres of cultural transmission as demonstrated by the St Nicholas’s Serbian Sisters Circle folkloric dance group.’⁵⁷

The Uniting Church in Australia (UCA) was established on 22 June 1977 when most congregations of the Methodist Church of Australasia, about two thirds of the Presbyterian Church of Australia and almost all the churches of the Congregational Union of Australia came together under the Basis of Union.

In 2005:

‘Today, Inala residents tend to be a comparatively religious with 2,106 Anglicans, 3,136 Roman Catholics, 748 Uniting Church, 1,953 other Christian faiths, 1,513 Non-Christians and 1,627 with no religion.’⁵⁸

⁵⁵ Certificate of Title Vol 2195 Folio 40 resub 1 of sub 3 of Portion 47 Parish of Woogaroo.

⁵⁶ Riley G What Inala means to me 1999

⁵⁷ G. Riley and Inala History Group, *Richlands*, p. 28; Harry and Audrey Kleinschmidt interview with Sue Keays, 6 November 2000

⁵⁸ ‘Brisbane - Inala - ourbrisbane.com’, www.ourbrisbane.com/living/suburbs/inala/home/ accessed Oct 2005

Individual Places of Worship

Methodist Church 1949- Samoan Methodist Church 1980s, 472 Archerfield Road Inala

Methodists in Darra established their church in 1924, and many years later supported the population in Richlands and Serviceton, all being part of the Sherwood Circuit, whose main church was at Graceville (now the well known Uniting Church).

Worship had begun in the local area at Richlands State School about 1934 when the Methodist Minister Rev AA Mills came in to give Religious Instruction.

Worship began in Serviceton/Inala around 1947 when Robert Brown and his family started the first Serviceton Sunday School in their ex-army hut home at Camp Darra on Archerfield Road: 'The Methodist minister Rev AA Mills would drive out with his three daughters and take it for them, with his portable organ in the boot... they used to have Sunday School under the trees.'⁵⁹

The Rev AA Mills also came to the Richlands State School to give Religious Instruction to the Richlands/Serviceton children.⁶⁰

Kevin Stephan:

'In 1949, all the (ex-army) huts had to go...I think the Methodists bought ours ...and pulled the hut to its new site in Magnolia Street.'⁶¹ (Actually Archerfield Road where the current church is today)

H Carter:

'It is worthy of note that Rev AA Mills, a senior Methodist minister, in 1949 purchased a hut from the Serviceton Cooperative Company and had it erected on the site in Archerfield Road. This hut was then used for Sunday School and regular preaching Services.'⁶²

⁵⁹ F Clark, V Mynott, *Serviceton The soldier settlement that became Inala* p 61,63

⁶⁰ Mynott V *Richlands State School 75 years 2009* p xii, 10, 14, 24,30

⁶¹ F Clark, V Mynott, *Serviceton The soldier settlement that became Inala* p 68

⁶² F Clark, V Mynott, *Serviceton The soldier settlement that became Inala* p 32

In September 1949 the Brisbane City Council gave approval for the hall for Sunday School purposes.⁶³



The first Methodist Church hall c.1949-1961 after it was moved to be in front of the 1956 brick church where it was used for other purposes.⁶⁴

Another view [when relocated to be the Girl Guide Hut].⁶⁵



⁶³ BCCA Survey and Record of Land card index

⁶⁴ Riley G History of our Inala and suburbs 1988

⁶⁵ Riley G *The History of Guiding in Inala* 1987 A Naumann collection



1951 aerial photo showing towards the bottom the Co-op store and two attached buildings and below that the Methodist Church hall.

Bob Weeks:

‘I remember the Darra Methodist Church having their Christmas Picnic in the grounds of the Richlands State School about 1952.’⁶⁶

The hall was also used as Mrs Robinson’s Child Minding Centre.⁶⁷ It was later moved to Lilac Street to serve as the Inala Girl Guides hut.⁶⁸

In 1951 the new Serviceton Estate owners, the Queensland Housing Commission sold/transferred 30 perches of the land on which the hall stood, Lot 212, to the Methodist Church.⁶⁹

In 1954 the *Brisbane Telegraph* reported:⁷⁰ (second column not connected to Serviceton)

⁶⁶ Mynott V Richlands State School 75 years 2009 p38

⁶⁷ Riley G History of our Inala and suburbs 1988 p 47

⁶⁸ Riley G *Some more history of our Inala and Suburbs* 1994 p 1; 1951 QIMAGERY aerial photo BCCA Archives Survey and Record of Land card index Portion 373/5/Lot 212

⁶⁹ Certificate of Title 531409 Vol 2651 Fol 149 1951

⁷⁰ *Brisbane Telegraph* 13 February 1954 p24



BCC granted building permission for a new church in 1954, subject to the existing hall to be relocated.⁷¹

The main body of the present church was built at this time.⁷² Rev A A Mills was the first pastor.

Enid Haslam (nee Brown):⁷³

I was a Sunday School Teacher for the Methodist Church, in an old Hut that once was a shop and now it is the Guide Hut in Lilac Street, Inala. I was married in 1951. I lived in Archerfield Road when my first son was born.

Mum and Dads house was on 4 acres, we grew vegetables, Dad was still in the Royal Australian Air Force. Mum had us children to look after and we are all still alive and well. During the war Dad was in New Guinea and Mum did a wonderful job with us. She was also a keen worker with the Methodist Church, and spent lots of her later life working on stalls in the grounds of the Methodist Church Hall to raise money for the New Church, which is still there in Archerfield Road.

I remember my twin brothers going to Church and being involved in the children's work there, and one of my sisters becoming a teacher at Richlands State School.

From Carola Robson 2017:

Mr. Herbert Carter

⁷¹ BCCA Survey and Record of Land card index

⁷² QIMAGERY website 1955 aerial

⁷³ Riley G History of our Inala and suburbs 1988 p 47; NAA Ref J56 Barcode 1384534

In the 1960s, Methodist Home missions found it very difficult to recruit ministers of the calibre of the Revs Mills and Mavor. However, early in 1960, Senior Home Missionary, Herbert Carter and his wife arrived and Mr. Carter was the first minister to be appointed to the new Inala Home Mission Station. Unfortunately, Herbert Carter, with 33 years of Home Mission work behind him was not in good health and considered himself to be unequal to the task of ministering to a congregation of a difficult financially challenge parish. However this friendly down to earth, cheerful Yorkshire man made a very positive contribution, regularly visiting parishioners, both young and old, who would not or could not attend church and carrying on the work of his predecessor by jointly conducting Church Vacation Schools for young people with the Salvation Army and Presbyterian Churches.

In 1962 the Manahans sold the adjacent Lot 213, the Cooperative Society's original corner store land, to the Methodist Church for £775.⁷⁴ The Church received approval from Council for a building application in 1962 for 'Church Recreation and youth works' [but this may not have proceeded]. In 1966 they applied for a small extension to the church for an air lock and a WC.⁷⁵ By 1988 the premises were referred to as the Samoan Methodist Church.⁷⁶



The (now) Samoan Methodist Church 472 Archerfield Road, showing the main bulk of the church built in 1955 with a minor extension on the left added later. 2016 photo

⁷⁴ Certificate of Title No 533194 Vol. 2659 Fol. 184

⁷⁵ BCCA Survey and Record of Land card index Archerfield Road; QIMAGERY 1960

⁷⁶ G. Riley and Inala History Group, *Richlands*, p. 28

Salvation Army Hall Lot 267 Azalea Street 1954 – 1975 Save theChildren Fund Kindergarten, 3 Poinciana Street Inala

In 1954 BCC gave approval for the erection of a Meeting Hall, and in 1966 for extensions to that hall, both shown in the following 1970 aerial photo.



In 1975 BCC gave the Save The Children Fund approval to construct a Kindergarten and clinic on the same site, and the adjacent one at 3 Poinciana Street.⁷⁷

Congregational Church 1955 - 1969 RAOB Hall – Goodstart 1993, 57 Poinsettia Street Inala

The Queensland Congregational Union purchased almost an acre of land in 1955 being resub 2 of sub 3 Portion 47, 57 Poinsettia Street (opposite the end of Punica Street, west of what became Richlands State School) and received approval to convert a hut to a church.⁷⁸

⁷⁷ BCC Archives Survey and Record of Land index card

⁷⁸ Certificate of Title Vol 2195 Folio 40 resub 2 of sub 3 of Portion 47 Parish of Woogaroo; BCCA Survey and Record of Land card index



Congregational Church 1964⁷⁹

In 1969 the 'Pride of Inala RAOB Buffalo Hall' received BCC approval to use the existing building as a place of assembly, but only until required demolition in 1973. However BCC approval was given in 1977 for the erection of toilets. It is now the Goodstart Early Learning Centre, first built c. 1993)

St Hugh's Anglican Church 1956- 105 Poinsettia Street Inala

Photographs from the Years 2000 and 2007 Calendars of St Hughs:

⁷⁹ Qimagery aerial snip 1964

A Short history of St Hugh's Anglican Church.

The first Church of England Service was held at Richlands State School, Progress Road, Richlands .
In a way the cessation of World War II can be attributed for the first step towards
the Church of England being established in Inala.
Cannon Massey was Rector of Sherwood at the time.

The First Communion Service was in 1947 held by Father Arkell Rector of Sherwood.
He held a monthly service at the school.

In 1951 Inala came into being. Father Armstrong Curate at the time recorded the religion of the tenants,
as the homes became occupied, and compiled our first Church Roll.
These people were visited regularly.

In 1954, Sunday school, which had been taught regularly since Cannon Masseys time, was an impressive 131,
with an average of 70 children each week.

During these periods the Ladies of the Church followed Darra's and Sherwood example and started catering.
They took over the catering at Milton Tournaments.

A Recreation Hall was purchased from the Housing Commission, and moved to its present site in 3 pieces.
On the 11th of November 1956 the Church was dedicated by Bishop Dixon.

It was named St Hugh as that was the nearest Saints Day.
Father Cavay was brought in as a full time Curate, appointed from Sherwood.

On Sunday 12th October 1958, at 11am the Church and section of the building were destroyed by fire.

In July 1959 we were separated from Sherwood, and made a Parochial District which included Darra.

1960 saw the first Vicar inducted, Father George Shaw, who was instrumental in having the Vicarage built.

Three more Priests followed, Father Hunter, Father Batten and Ron Edgar who also served the Community
as a Teacher in Serviceton South State School.

Father Gordon Petersen was next. He was instrumental in having the new church built,
which is a credit to all parishioners, who worked very hard to complete it.
Not forgetting the untiring work of the late Mr. Earl Fuller also Mr. Cec Allen.

Unfortunately, Father Petersen was transferred before this task was completed.
With the arrival of Father Ron Marsh, and help from a Community Project, we had our Church completed.

Father Ron Marsh was followed by the Late Father Peter Allen.

The Rev'd. John. N. Cuffe, is now our Priest.



Richlands State School, Progress Road, where Anglican Services were first held.



This building was brought to Inala in three pieces.



**Original Church Dedicated
17th November 1956.**



Evensong in the Hall at St Hughs. Taken the day of the fire 1958.



St Hughs Dramatic Society, back in the 1950's. Courtesy of Joyce Greer (nee Cookman).



One of the many St. Hugh's Debutante Balls, 1963. Courtesy of June Holmes.



20th Anniversary of the New Church - 2001



Mrs J Smith has kept a copy of the official Parish history to 2001 ‘Anglican Parish of St Hugh 20th Anniversary of the Consecration of the Church, of which some extracts are noted below.

Anglican worship had begun in the area at Richlands State School about 1934 when Religion was part of the curriculum, and for a time an Anglican Sunday School was run under the School building; the first local Anglican service was held under the School in 1945 and

continued there for years.⁸⁰ When Inala State School opened in 1955 an additional Sunday School was commenced there.⁸¹

‘1945: The first Church of England service held in the Richlands area was held at Richlands School grounds in Progress road. Canon Massey, Rector of Sherwood, conducted the service.’ The Rector from St Matthews Church of England parish at Sherwood came once a month and held services under the [Richlands] school.⁸²

In 1956 The Corporation of the Synod of the Diocese of Brisbane purchased 1 acre and 64/100 perches of land being Resub 1 of Sub 3 of Portion 47 from Northern Veneer Pty Ltd.⁸³ [163 Poinsettia Street] The land is believed to have been purchased for 1 pound. (In effect donated by the Hancock Family).⁸⁴

In 1956 BCC gave approval for the erection of a Church and Hall, and in 1966 the provision of toilets and a garage.⁸⁵

‘A recreation hall was purchased from an old American army area in Holland Park and was moved in 3 sections to the site on Poinsettia St. On 16th November 1956 this building was dedicated by Bishop Dixon as St. Hugh’s Church. St. Hugh’s patronal day is the 17th November. The day of dedication was the closest day to St. Hugh’s Day.’⁸⁶

The hall was moved in three sections and then had one section set aside for worship, accommodating one hundred. The other sections were used as the church hall.⁸⁷

‘At 11 o’clock on a Sunday morning in November 1958 the church and stage section of the building was destroyed by fire. Evensong was held the same evening by using pressure and hurricane lamps for lighting enabling the service to continue.’⁸⁸

G Riley: ‘Anglican Sunday School and church services were initially held underneath the Richlands State School building. c.1955/56 the St Hugh’s Anglican Church at 163 Poinsettia

⁸⁰ Mynott V *Richlands State School 75 years* 2009 p xii, 10, 14,33

⁸¹ Anglican Parish of St Hugh *20th Anniversary of the Consecration of the Church* courtesy of Ms J Smith; Riley G *Richlands School 1934-1984*

⁸² http://anglicanchurchsq.org.au/wp-content/uploads/2013/10/parish_profile_inala.pdf

⁸³ Certificate of Title Hancock Bros Pty Ltd No 422300 Vol 2195 Fol 40

⁸⁴ http://anglicanchurchsq.org.au/wp-content/uploads/2013/10/parish_profile_inala.pdf

⁸⁵ BCC Survey and Record of Land Index card

⁸⁶ http://anglicanchurchsq.org.au/wp-content/uploads/2013/10/parish_profile_inala.pdf

⁸⁷ Anglican Parish of St Hugh *20th Anniversary of the Consecration of the Church* courtesy of Ms J Smith.

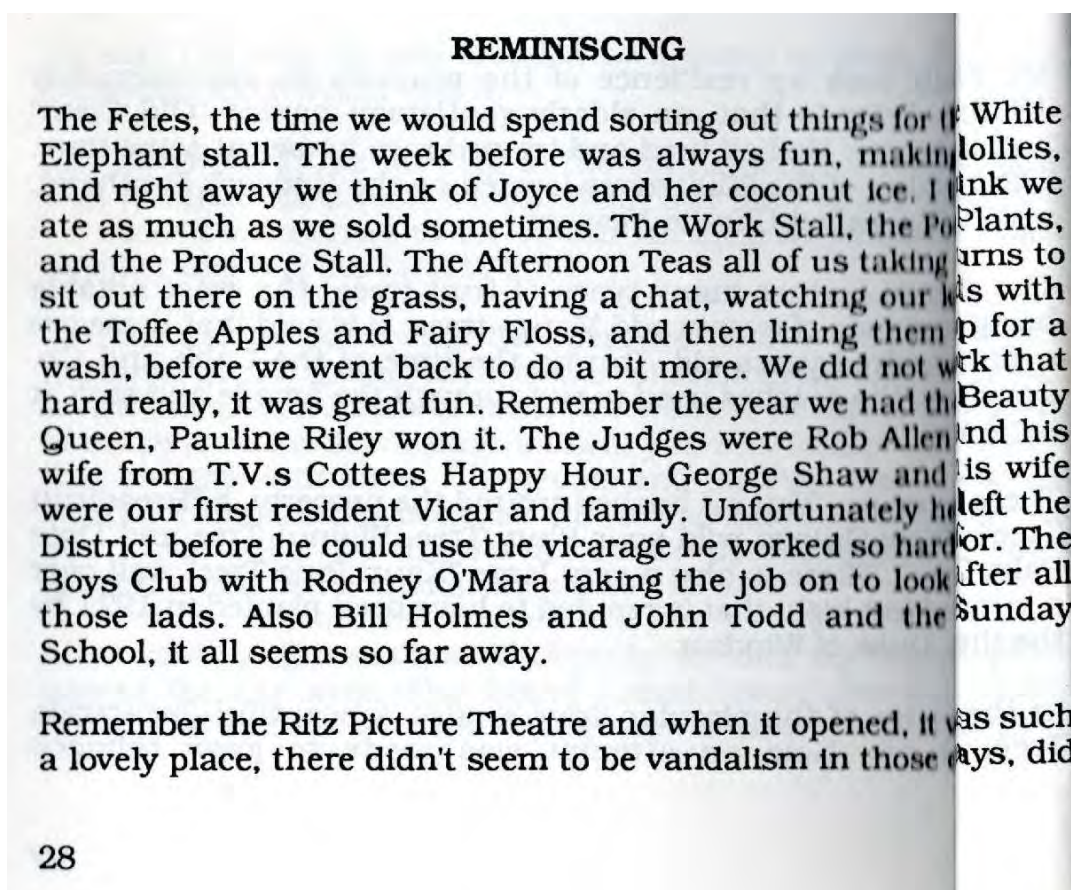
⁸⁸ http://anglicanchurchsq.org.au/wp-content/uploads/2013/10/parish_profile_inala.pdf

Street, corner of Clipper Street opened in a wooden hut provided by the Immigration Department. The church was burnt down in 1958; it had been where the car park is now (1999). Its rebuild was made possible by a financial gift from Mr and Mrs Forbes. More information is available'.⁸⁹

In 1980 BCC gave approval for the erection of a 'prefab church' adjacent to the existing.⁹⁰

'1977 Fr Gordon Peterson was inducted as full time vicar for St.Hugh's. It was during his ministry that the present church was built. In March 1981, a Bell modular building was delivered on site. Under the guidance of Fr. Gordon Peterson, and with the help of dedicated parishioners the building was erected and painted. The Church was consecrated on 20th June 1981 by the Archbishop of Brisbane The Most Rev. John Grinrod.'⁹¹

Mr Smith has retained a copy of a note penned by long time church member Bill Holmes:



⁸⁹ Riley G What Inala means to me 1999

⁹⁰ BCC Survey and Record of Land Index card

⁹¹ http://anglicanchurchsq.org.au/wp-content/uploads/2013/10/parish_profile_inala.pdf

My earliest memories of the ANGLICAN CHURCH in INALA from January 1954 .. June & I arrived in Inala in the summer of 1953 /54. We resided in a house situated at No 6 . Poinsettia St along with our daughter Glenda and were the first settlers to live in the street where ST. HUGH,S Church now stands..The area where the original church was built Encompassed a large tract of timber covering about 3 acres which was donated by the Hancock Family of Ipswich..Part of our land was eventually taken over by the Education Department for building Schools..

In these early days Church Services were held weekly under the RICHLAND Primary School And were presided over by the Rev..Arkell as we were under the direction of the Parish of SHERWOOD at this time with ST.MATTHEWS as the hub of activities..

The original Building Plan for the donated land included a Church & Hall which were built from previously used Defence Department stock arriving in about 4 pieces and being erected On site in 1957.. The Hall still stands in its original position ,but initially attached to the back wall of the Hall & jutting out into where our carpark is situated was our original Church..

Unfortunately the Church was completely destroyed by fire on a Sunday morning after Service and also damaged about 20% of the Hall including the stage which was at the opposite end of the Hall to where it is now ..this occurred in 1958..

Prior to and immediately after the fire we staged Saturday night Dances in the Hall as it was the only social activity in the area at that time ; the nearest movie theatre was at Darra ..

After the fire we hung a huge tarpaulin right across the width of the Hall to completely cover the damaged section including the stage but we still managed to hold the popular Saturday night dances which did not finish until about 11 pm. After which a crew of volunteers would race in sweep the floors , set up the Altar and arrange the seating for the morning services Amazingly it all went like clockwork..

During this period we were holding two morning services and an evensong service each Sunday and catered for a Sunday School for over 100 children (where are they now ?)

At this very busy time we also had a strong and talented Dramatic Society which was formed by a local school teacher Bob Jeays and his wife Sue in 1957 .and later taken over by Ralph Bradbury.. Some of the plays produced were[Happiest days of our life][One wild oat] [The Winslow Boy] [While the sun shines] & [The man who came to dinner]

After the fire damage, the Group traveled to other Parishes including All Saints in the city & The P.A.Hospital performing “ The man who came to dinner “ to raise funds for the repairs to our Hall .. It seemed only a short time for it to be repaired and we were back in operation .

As June & I were Ballroom Dancing Instructors , we also started Ballroom classes with the aid of Mr Wally Chene a Professional Dancing teacher from the Sandy Robinson Studio every Tuesday night. These classes were always well attended and the emphasis on Dancing led us to organizing the First Debutante Ball ever to be held in Inala in May 1961. The Hall which in those days had a beautifully polished floor lent itself to a great setting for the Event..

The Reverend George Shaw was the first permanent Priest in charge of our Church and along with his wife presided over the evening . In all ,Nine Debutantes were presented to the Bishop Beale .and made.a beautiful sight as they and their partners waltzed around the floor. Seeing our Debutantes charm us with their grace and beauty prompted

Mr .Ian Wade,the son of the Matron of Honour Madge Wade and was then a student at Slade Anglican College,to pen a note of tribute to the Debutantes and their Trainer,Mrs.June Holmes who was also the Convenor of the Ball..The poem was titled ‘Nine White; a copy of which appears above. Mr. Wade went on to become the Private Secretary to Three State Cabinet Ministers and the C.E.O. of the Qld Racing Administration There were a series of Debutante Balls until 1973 & 1974 when the Balls were held in the Coconut Grove Hall which was originally the Inala Ritz Movie Theatre,where the Debutantes were presented to Bishop Ralph Wicks.and the Maids of Honour were Mrs. Judy Newsome and Mrs. Kath McDonough..

The biggest feature of 1962 was holding our first Gala Fete & Queen of the Carnival Competition won by Pauline Riley & top Fund raiser Celia Mackay who was the granddaughter of Fred Cookman the first Postmaster in Inala..

BILL HOLMES, wife
June

there? Merle Mallory and Truus Antonisse were the Usherettes, Loraine Larkin and Merle Free in the Ticket Box. Then it was changed into a Dance and Functions Hall, because with the coming of Television, people watched the films at home.

What about the Debutante Balls. We had the first Deb. Ball in 1961, all those lovely girls, and the hours of practice we put in, but it was all worth it. The first Debs were, Lynne Berry, she married her partner, (later on) Bary Mair, Val Rowan and Ken Keith, Lynette Fuller and Alan Rogers, Barbara Huntley and Gary Wilson, Ross Jeffs and Ian Gaskell, Ruth Pottinger and Peter VanDe Hoek (married each other) Joan Wherry and Harold Brown, Judy Dance and (her cousin) Gordon Reid, Marjorie Keith and Robert Brown. I wonder how they all are today? Madge Wade was Matron of Honour, Glenda Holmes and Fran Newsome were the Flower Girls. The Debutantes were presented to Reverend and Mrs. R.G. Beal. Jess Fuller and her merry band of willing helpers, catered for us in a large Marque, outside the Hall. A wonderful time was shared by all.

June Holmes.

MEMORIES

Mrs. Fuller has been a faithful and dedicated person to St. Hugh's Anglican Church for a very long time. In the field of catering she had worked hard and long, with a lot of other members of the congregation. The Catering Service, began way back in the 1950's. Mrs. Fuller took on the task to feed about 200 people, at our first Debutante Ball, in 1961. This was the first Deb. Ball in the area. What a great time we all had. Mrs Fullers daughter, Lynette made her Debut then along with eight other girls. Lyn was a Sunday School Teacher, her brother David was an Alter Boy and taught Sunday School too. Mrs. Fuller remembers they had arranged a function, a luncheon at the Church, everything was ordered, but not the fire which completely destroyed the Hall, but it didn't destroy the plans. The luncheon was set up at Mrs. Fullers place in a large Marque, there was fun and food for all, at 4 pound per head. Mr. Earl Fuller was in charge of our New Church Building, without whose help and hard work, as well as skill in his trade with Gods help completed this Church, which is a lovely place of worship. Earl has since passed away and is missed in our community.

Kath McDonough has been taking care of the Catering for many years now. Her faithful band of workers over the years have ben

many and some wonderful times we have had together. I can't remember everybody's name but some were, Mrs. J. Walker, Mrs. G. Browning, Stella Smith, Jess Fuller, Margaret Cowlshaw, Elsie Peters, Mrs. E. Briggs, Mr. and Mrs. A. Martin and Diane, Mrs. J. Holmes, Edna Thornbough, Aileen Weller, Diane Cassie, J. Newsome, R. Booth, Mr. and Mrs. G. Keith, Moly Clarkson and all those other people I can't remember the names. Beatrice is our dependable hall cleaner.

Father Ron Marsh is our resident Minister and his wife Barbara is always ready to help at catering and whenever else she can. Ken Cassie and Pat McDonough are also a great help at Church functions.
Jess Fuller.

92

⁹² Riley G History of our Inala and suburbs P28-30

ST. HUGH'S PLAYERS AMATEUR DRAMATIC SOCIETY.

THE MAN WHO CAME TO DINNER

The Cast of this Play and that of our past Productions, "The **Happiest** Days of our Lives" and "One Wild Oat" is composed of **residents** of the Inala and Richlands District, who are members of the Congregation of St. Hugh's Church of England, Inala. Some **appearing** in this Production are making their theatrical debut **and** most of the Cast apart from these have had limited stage **experience**. At this time the Group was only 1 year old and it was **really** going well, but they were always asking for new faces to join **the** ranks.

Invitations were extended to all who had any theatrical ambition **and** who would like to join to feel welcome and enjoy the social atmosphere with us. The Secretary was Miss Joan Spann, who **later** on married Francis Keith.

One of the Productions (which proved most popular) "The Man **Who** Came to Dinner" was really great. We travelled to Goodna, **Princess** Alexandra Hospital, Booval, and other places (names **escape** me). This was good for us both financially and for pleasure. **The** Cast was as follows. Madge Wade, Gert Riley, David Fuller, **Judy** Franks, Graeme Stepham, Connie Reeve, June Holmes, Alex **Terrell**, Sue Jeays, Derek Miall, Ralph Bradfield, Bob Jeays, Len **Wallin**, Vernon Wilson, John Franks, Ross Jones, Bruce Brady, **Joyce** Cookman, Harry Kirkwood, Ian Maddox, Esme Wallin and **Fred** Cookman produced this play, with Reg Wade as Stage **Manager**.

We continued for several years enjoying the plays and all the **social** activities associated with the different Productions, but, **and**ly people left the area, and we eventually went into recess.

Another member was Gary Wilson and dear Mrs. Wilson, who kept **the** Group going, making cups of tea, telling us "You're on next, get **ready**" ironing and sewing and preparing on set items, that we **would** probably forget. A lot of these friends have passed away, **leaving** us with "Happy Memories". Yes all we have left of our **"Dramatic** Society, is Happy Memories.

Mr. and Mrs. Gordon Keith were always there to assist in any way **they** could. In fact, without Mr. Keith we would not have gone

93

In the 1990s 'Icy Tea' Inala Community Theatre was based at St Hugh's using the hall for its productions.⁹⁴

Meals on Wheels started in St Hugh's, then transferred to the Methodist Church in Berrington St⁹⁵ [Note for Berrington Street read Berrigan Street]

⁹³ Riley G History of our Inala and suburbs 1988 p29, 31

⁹⁴ A.Naumann collection

⁹⁵ Riley G History of our Inala and suburbs 1988 p 72

MEALS ON WHEELS.

Flo Smith, the first Secretary has left the District, but still returns to the Annual meetings and Dinners. Joan Musch was the first Treasurer. At the Annual Dinner August 1987, Appreciation Awards were made to Mrs Higgins, Mrs Musch, Mrs J. Swotten, and a life Membership was given to Flo Smith, who at the age of eighty was very pleased to receive the Award.

Meals on Wheels started in St Hugh's Anglican Church, then transferred to Methodist Church in Berrington Street, which was a bit bigger as they deeded more space. We now have land and we hope to start operating from our own building.

Mid 1954.

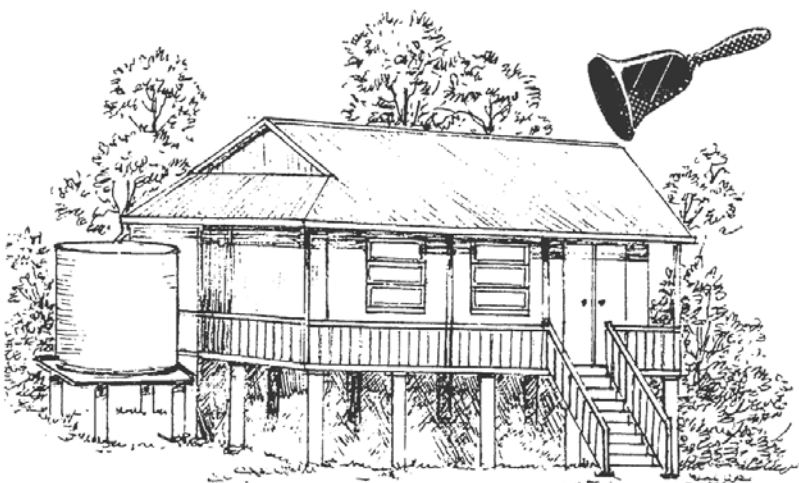
Life for me had taken a change for the better.

Carolyn and Pauline went to the Anglican Sunday School, where Church Services were held too, under the Richlands State School. There Mrs Cookman introduced me to the Keiths, Forbes, Terry's, Spans, Broughs families and many more.

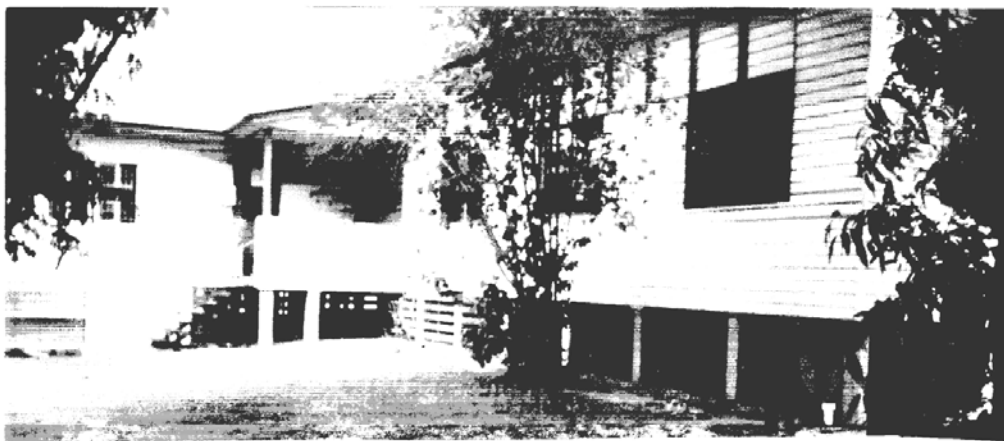
Eventually in 1955/56 we had a building from the Immigration Dept to use for our Church, which was named, St Hughs Anglican Church. Rector Arkel, from Sherwood was our first Minister.

Father Cavay, Father Hunter, George Shaw, Father Baton, Father Edgar, and so on.

Now we have Priest in Charge, The Rev'd John N Cuffe. Associate Priest The Rev'd Bob Walsh. Hon. Assisting Priest, The Rev'd Geoff Reeder.



*St. Hughs Church.
Our three different
places of Worship,
during the 45 years
of living in Inala.*



⁹⁶ Riley G History of our Inala and suburbs 1988



Richlands State School, first church hut and current church. 2016 Photo from website.

In 2017 the Rev Carol Palmer continued a long tradition by conducting Anglican services at the Aveo Durack retirement village.

St Mark's Catholic Church 1956- Lilac Street Inala

In 1946 the Catholics in Richlands Estate were (perhaps unofficially) donated 1 acre of land by Mr W F Murphy on the corner of Garden and Pine Roads. The Catholic Church obtained an ex-army hut which was duly consecrated as a church. Mr Murphy died about 1949 and after problems with his estate the Catholic Church moved the hut to Darra.⁹⁷

The RISHG have a folder of Parish history documents, only some key points are included in this Research Paper. Much of the School history is there too but is not included in this Paper.

98

Part of the following Church history is also from the Church website.⁹⁹ The first house mentioned was at 71 Lilac Street on the eastern corner of Hydrangea Street.¹⁰⁰

⁹⁷ Clark Richlands Early History of the Development of the Suburb p 58

⁹⁸ RISHG Library file no 41 Parish of St Marks folder

⁹⁹ <http://www.stmarksinala.qld.edu.au/about-us/Pages/St.-Mark's-Parish-History.aspx>

¹⁰⁰ BCCA Survey and Record of land.

St. Mark's Parish History

Adapted from Beginning History of St. Mark's

written by Sr. Mary St. Gregory, Foundation Staff Member

The Parish was blessed in 1958.

The parish was not always called St. Mark's. Initially it was the Parish of the Divine Word. The first priest who came to Inala belonged to the Society of the Divine Word and his name was Fr. Kasprus. He purchased a house on the corner. This is where he lived, where Mass was said and where all parish activities were carried out. Not all people could not fit inside the house, so they stood in the yard and occasionally had a peep through a window. Army huts were obtained and joined together to make a temporary church. In 1958 it was blessed and opened by Archbishop Duhig. Fr. Kasprus was not young and Inala grew rapidly. The strain began to tell on Father's health and so the Archbishop was asked to staff the parish with Diocesan priests.



St Mark's Church - 1956



St Mark's Church - 1981



St Mark's Church Today

Fr. Lyons asked if he could go to Inala. He had a vision for this new satellite suburb. He guided a culturally diverse group of Catholic people. Parishioners of all ages shared, in various ways, the honour and excitement of establishing a visible, worshipping community at St. Mark's.

Fr. Lyons wanted to establish a school in the parish. He began to work on this in 1971. He wanted the school to be staffed by the Sisters of Mercy. The first teachers at St. Mark's School were three Mercy sisters. Since there was no convent in Inala then the sisters lived in the convent at Goodna. Each day Fr. Lyons or Fr. Hatch, the Curate, would drive them to and from school. On Sunday the sisters would go to Mass at Inala, and after Mass would teach religion to the Catholic children who attended the state schools in the area. In the afternoon they would walk, map in hand, and visit the families in their homes. All the streets looked the same then and it was very easy to lose one's way. The sisters wore long black dresses but they became very adept at hopping over the low fences when chased by a dog!

Fr. Lyons never ceased working for the good of St. Marks. Every day he was cutting and clearing and was seen more in his straw hat driving a tractor than in his collar!. He worked extremely hard and expected everyone else to do the same. He passed away in 2002 but was always happy to talk about the early days in Inala.

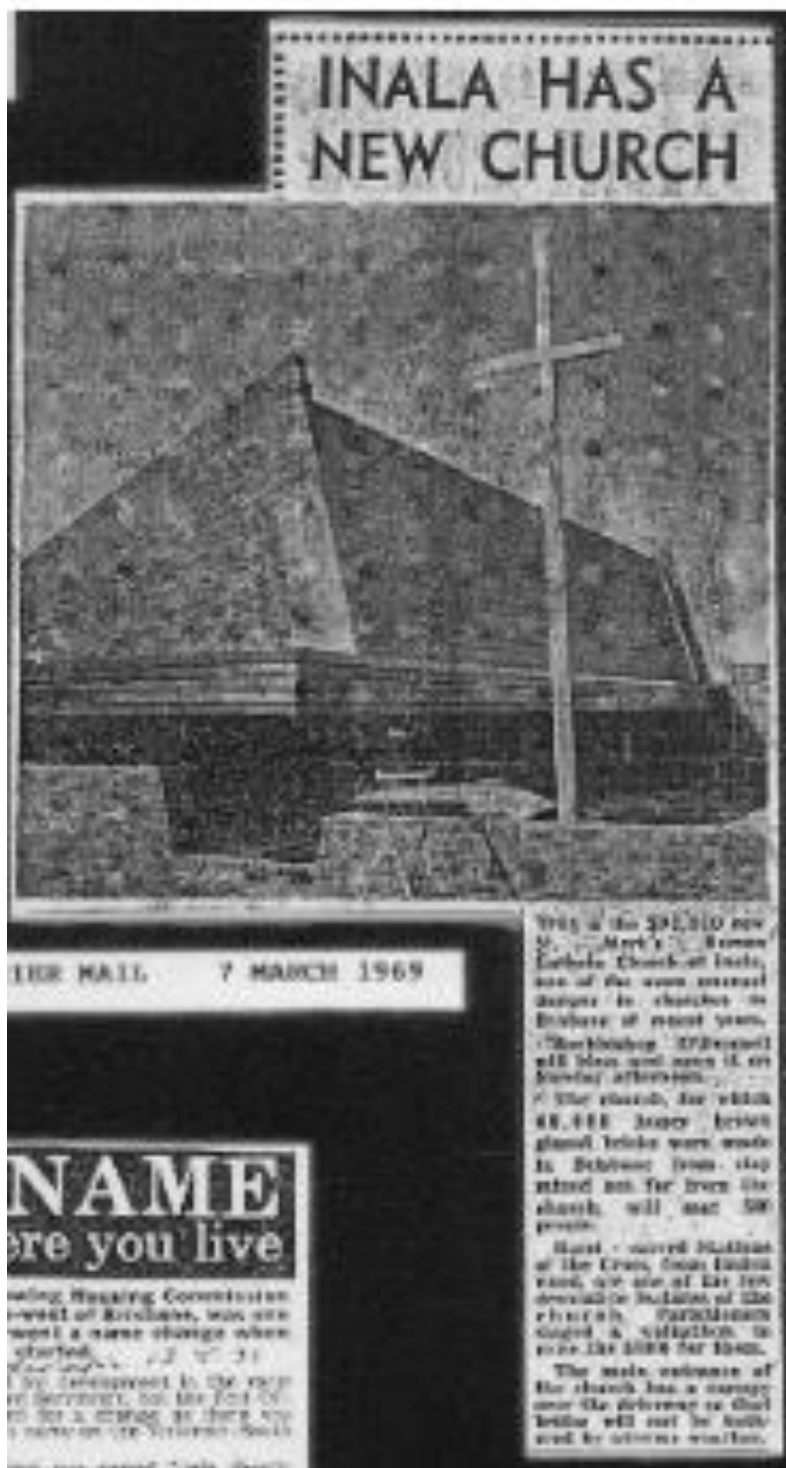
St. Mark's - Clearly and Boldly

The Roman Catholic Sisters of Mercy were granted approval by BCC in 1957 for the erection of a church/school on Sub 942 Portion 355, now known as 96 Lilac Street Inala. In 1959 a storeroom was approved and in 1962 also a separate Primary School. Further approval was given for a new church building in 1968, the builder being Corbett P/L at a cost of \$78 000.¹⁰¹

A Parish Convent was opened for eleven sisters in 1964.

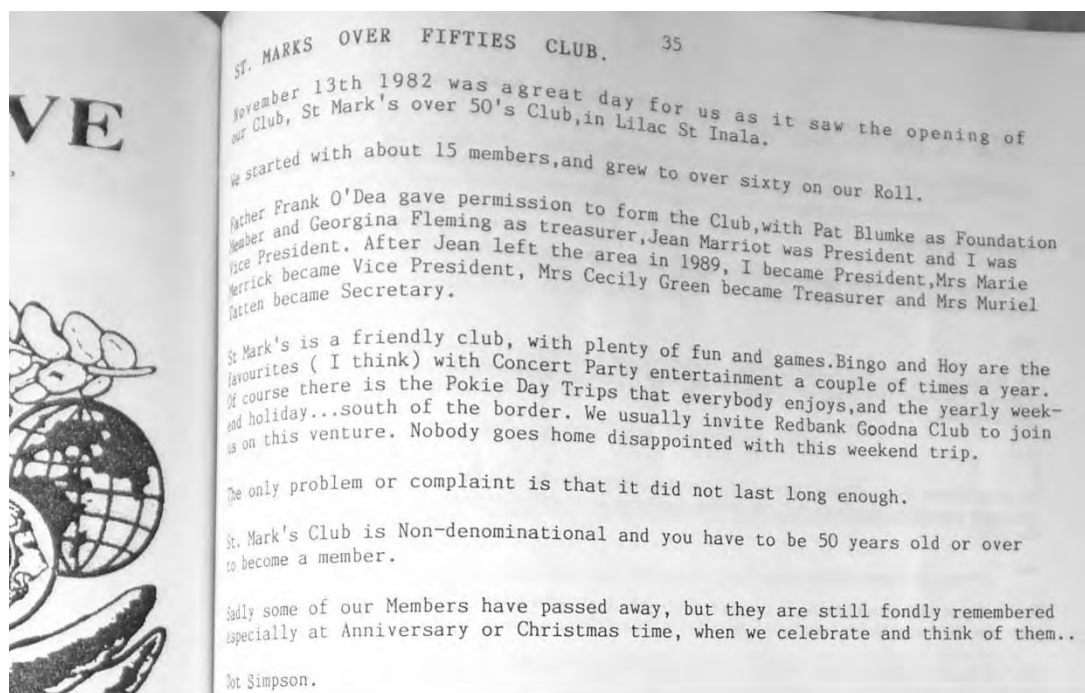
¹⁰¹ BCCA Survey and Record of Buildings.

A new Catholic church was dedicated in 1969, newspaper article follows:¹⁰²



The Silver Jubilee was celebrated in 1988.

¹⁰² *Inala Topic* (hard copy JOL) – 1967/68; Courier Mail 7 Mar 1969 p26



Congregational Church 1956- Church of Christ 2003 - Samoa Westside Brisbane Tecoma Street Inala

The Inala Congregation Christian Panel applied in 1956 for Council approval of a Presbyterian Church at Sub 305, corner of Lavender and Tecoma Streets.¹⁰⁴

The Uniting Church in Australia... (Presbyterian many years ago (written 1999)¹⁰⁵)

Now the Congregational Church Samoa Westside Brisbane.

¹⁰³ Riley G Some more history of our Inala and suburbs 1994 p35

¹⁰⁴ BCC Archives Survey and Record of Land card index Por 354 Sub 305

¹⁰⁵ Riley G What Inala means to me 1999

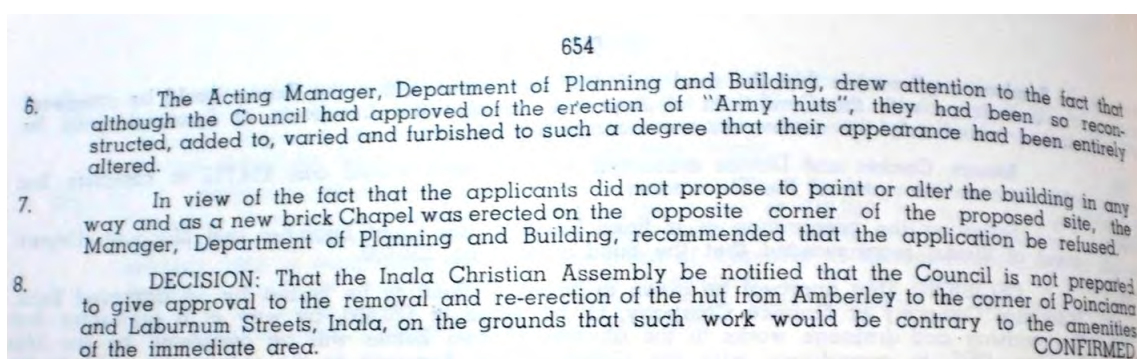


2017 Photos

Gospel Hall Assemblies 1956 – Inala Christian Assembly 1962 – Great Hope Baptist Church 2003 - 87 Poinciana Street Inala

The Gospel Hall Assembly received approval from BCC in 1956 to erect a gospel hall, which was built on the Poinciana/Laburnum corner by 1960, being the component that runs north to south.¹⁰⁶

The Assembly applied to Council to move an army hut from Amberley to a site on the corner of Poinciana and Laburnum Streets in 1961, but this was refused on the grounds of appearance: BCC minutes:¹⁰⁷



In 1962 the Inala Christian Assembly applied for approval of additions to the chapel to the rear (south), and in 1966 the Inala Hospec (?) Chapel applied for a small toilet block.¹⁰⁸



The north-south first church with the second part to the right.

¹⁰⁶ BCCA Survey and Record of Land card index

¹⁰⁷ BCC Meeting Minutes 1960-61 minute 2015

¹⁰⁸ BCCA Survey and Record of Land card index



The second part, east-west. 2016 photo.



‘Great Hope in Inala began in July 1998 under the leadership of missionary Pastor Ed Sims and his wife Joyce from Great Hope Baptist Church in the USA. Pastor Ed and Joyce faithfully worked in and around the western suburbs of Brisbane. As the church grew, the Lord provided our current building in 2003.’¹⁰⁹

In 2003 ‘The church shares the building with a Vietnamese language service each Sunday’.¹¹⁰

¹⁰⁹ <http://www.greathopebaptist.com.au/>

¹¹⁰ *Surburban Star* September 2003 A Naumann collection.

In 2017 Pastor David Proctor who lives at Aveo Durack retirement village also conducts services there each week.

Baptist Union 1957 - Westside Multicultural Baptist Church, 92 and 121 Biota Street Inala

In 1957 the Baptist Church Union received permission from BCC to build a church and Sunday school on a house sized Lot at 92 Biota Street, but this did not eventuate. A year later the church were given BCC approval for a church at 121 Biota Street, corner of Balsa Street, adjacent to the shops Sub 858 Portion 354 where it was soon built. The church also applied to build an extension in 1965/6.¹¹¹

In 1974 and '75 the Inala Baptist Church received approval from BCC to build a dwelling at 68 Rosemary Street opposite the end of Holly Street, possibly a manse. Lot 28, Portions 354,358.¹¹²

G Riley: The president of the Baptist Church Union of Queensland (Mr E S Jones) officially opened the new Baptist Church in Biota Street on Saturday 4 July 1959. The Secretary of the local Baptist Committee (Mr R Paulsen, 106 Buddleia Street Inala) tells us that the church and fittings were a gift from the City Tabernacle to the Baptist Union of Queensland.¹¹³

Today the church is known as the Westside Multicultural Baptist Church,



¹¹¹ BCC Archives Survey and Record of Land card index Por 354 sub 79 and Por 354 Sub 858

¹¹² BCC Archives Survey and Record of Land card index Por 354/358 Lot 28.

¹¹³ Riley G Some more history of our Inala and Suburbs 1994 p 36

Methodist Church 1958 - St Ives Uniting Church in Australia, 29 Berrigan Street Inala

By 1956 the Methodist Church, Rev AA Mills, had acquired a substantial area of land at the junction of Berrigan Street and Aspen Street, Subs 479-483 which had been reserved by the Housing Commission for community facilities. That year the Church received approval from BCC for the erection of a hut on Lot 480 as a temporary Church and Sunday School subject to conditions, and a year later were ordered to demolish the hut. In 1958 the Methodists were granted BCC approval for the erection of a church, a hall and a kindergarten, on Lots 480-482 and at least the church proceeded, with frontage to Berrigan Street and it remains today as the church hall. Permission was granted in 1972 for the building of a small Kindergarten.¹¹⁴



The 1958 first church, now the church hall. 2017 photo

RISHG member Rosalie Parfitt went to the Sunday School from 1961 -1964, and she was in a church group called the Rays for girls and Okays for boys – these names were later changed to Boys and Girls Brigades when the Uniting church was formed.¹¹⁵

In 1974 the Inala Community House acquired the land at the rear, Lots 482 and 483 from the Methodists for use as a Kindergarten.

The official Website gives no information.¹¹⁶

¹¹⁴ BCCA Survey and Record of Land card index

¹¹⁵ Note from Roslaie Parfitt 2017

¹¹⁶ <http://uca.org.au/> accessed July 2017

MEALS ON WHEELS.

Flo Smith, the first Secretary has left the District, but still returns to the Annual meetings and Dinners. Joan Musch was the first Treasurer. At the Annual Dinner August 1987, Appreciation Awards were made to Mrs Higgins, Mrs Musch, Mrs J. Swotten, and a life Membership was given to Flo Smith, who at the age of eighty was very pleased to receive the Award.

Meals on Wheels started in St Hugh's Anglican Church, then transferred to Methodist Church in Berrington Street, which was a bit bigger as they needed more space. We now have land and we hope to start operating from our own building. ¹¹⁷

[Note for Berrington Street read Berrigan Street]

A new church was built in 1992 and the first church became the church hall.



The 1992 new church, 2017 photo

In 2003 it was noted that the church had a separate Samoan Congregation.¹¹⁸

¹¹⁷ Riley G History of our Inala and Suburbs 1988 p72

¹¹⁸ Activities Map 2003 A Naumann collection.



The entry between first and second churches. 2017 photo

Glad Tidings Tabernacle 1959 - Seventh Day Adventist Church, 124 Crocus Street Inala

The Glad Tidings Tabernacle were granted permission by BCC in 1959 to build a church, and in 1961 a church hall and in 1975 a Sunday school, on Lot 307/355, 124 Crocus Street.¹¹⁹

Today the building is the Seventh Day Adventist Church.



2017 photo

¹¹⁹ BCC Archives Survey and Record of Land index card microfilm

Lutheran Church of the Good Shepherd 1959, Corsair Street Inala

Corsair Street corner of Inala Ave.¹²⁰ No longer in use –see photo below

Sub 939 Portion 355 building approval given for a church hall 23/07/1959, and for extensions to the hall in 1976.¹²¹



2017 Photo

Jehovah's Witnesses Kingdom Hall c. 1958 24 Freeman Road Durack

In 1956 the Jehovah's Witnesses received approval from BCC to erect a building for religious purposes on Lot 3/358 at 24 Freeman Road, together with subsequent minor extensions.¹²²

¹²⁰ <http://www.lca.org.au/>

¹²¹ BCC Archives Survey and Record of Land

¹²² BCC Archives Survey and Record of Land index card microfilm



2017 photo

Salvation Army Inala Corps 1960, 83 Inala Avenue Inala

Website ¹²³

83-85 Inala Avenue sub 754/755 Portion 361

Granted approval for 'Meeting Hall and Quarters' 21/06/1960, and for a dwelling 11/10/1974¹²⁴



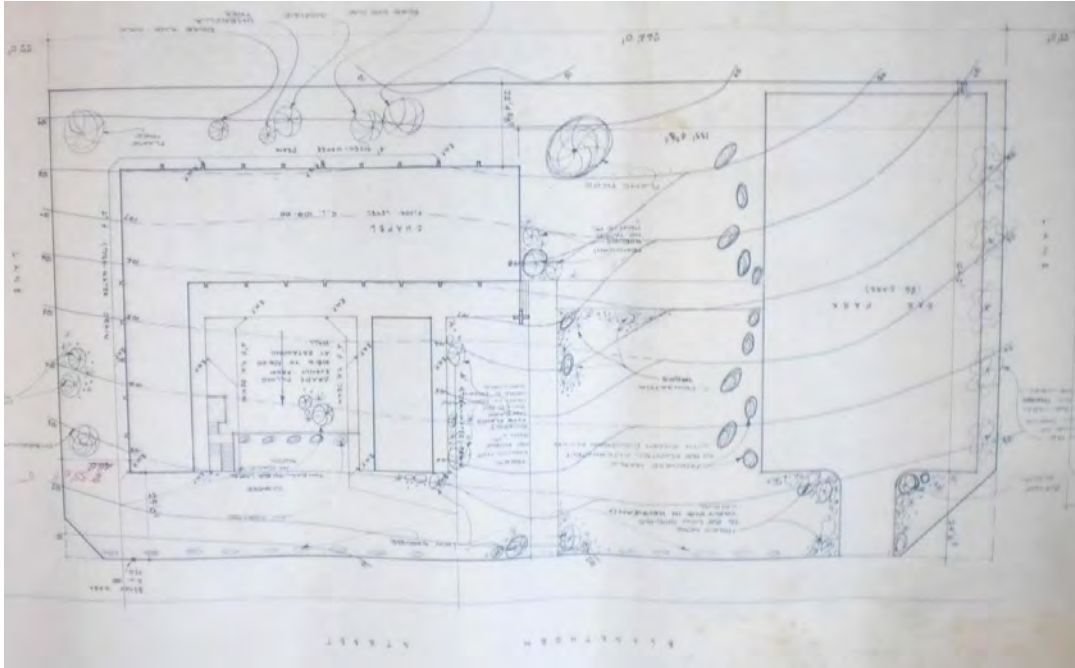
2017 photo

¹²³ <https://salvos.org.au> accessed July 2017.

¹²⁴ BCC Archives Survey and Record of Land index card

Jesus Christ of the Latter Day Saints 1963- 20 Blackthorn Street Inala

The Church at 20 Blackthorn Street received Building Approval from BCC in 1964 and the site plan follows:¹²⁵ It appears to have been built prior to 1970.¹²⁶



2017 photo

¹²⁵ Commercial Building Application 1697/64 BCC Archives

¹²⁶ Qimagery 1970 Ipswich

Church of the Nazarene 1963, 22 Sitella Street Inala



2017 Photo

In 1963 the Church of Nazarene submitted plans to BCC and was granted approval to construct a church, on Lots 316 Portion 361, Sitella Street Inala, and in 1968 it was given approval to use the church hall as a pre-school. In 1973 the church was given approval to construct a church manse on Lot 317, and in 1981 to amalgamate the two Lots and to extend the church by 170m².¹²⁷

‘The church was established in the late 1968s as part of the Wesley tradition’¹²⁸ In fact it opened in August 1968, celebrating its 40th birthday in 2008 when the Pastor was Marian Kent.¹²⁹

In 1968 the Co-operative Parish of Inala (Methodist, Presbyterian and Congregational churches organised a mini- walkathon for fundraising).¹³⁰

¹²⁷ BCC Council minutes 1962-63 minute 3062. BCCA Survey and Record of Land card index.

¹²⁸ <http://www.nazarene.org.au/churches/anwd/inala.html> accessed July 2017

¹²⁹ *The Satellite* 6 August 2008 A Neumann library

¹³⁰ Private newspaper *The Satellite* August 1968 p2 and 11 A.Naumann collection.

Methodist Church 1966– now Community House - 40 Sitella Street

The Methodist Church of Queensland was given approval by BCC in 1964 to erect a church a hall and kindergarten on Lots 245/247 Portion 361. The church was opened in October 1966 by a Methodist Minister but as ‘Community House’.



Opening plaque dated 1966.

In 1968 approval for the construction of an office extension was also granted to the Methodist Church.¹³¹

See Paper 8 Community buildings for more information on Community House.

¹³¹ BCCA Survey and Record of Land card index



132

**Seventh Day Adventist 1958 later First Reformed Church 1965 44 Poinsettia Street
Inala**

In 1958 The Seventh Day Adventist Church cleared the land at 44 Poinsettia and received approval from BCC to build a church hall, and in 1964 to build a church.¹³³ However a 1964 aerial photograph shows only the cleared land.¹³⁴

BCC minutes to be checked Check with Crocus St after BCCA visit

¹³² Inala Library CD IHD 12

¹³³ BCCA Survey and Record of Land card index

¹³⁴ Qimagery 1964

A member of the RISHG, Jaap den Otter says that the First Reformed Church was established by Dutch immigrants and had a Congregational connection. Dutch immigrants raised money, and received approval, subject to conditions from BCC to build a church, meeting rooms, Sunday school and children's club in 1965. However only the church was built at that time and BCC gave approval for a house to be built behind in 1968, but this was cancelled and a new approval for a church hall/Sunday school to be added was granted in 1973.¹³⁵



2017 photo

Assembly of God/New Life Church c.1990 (Pentecostal), 60 Thrush Street Inala

‘New Life is affiliated with Australian Christian Churches. Australian Christian Churches is a movement of Pentecostal churches in voluntary co-operation.

‘In our church you will find vibrant, contemporary Christians who love the Lord Jesus Christ and express that in lively praise and worship and in caring relationships. The congregation is drawn from many countries around the world and has a very international feel.

New Life was started in Inala about forty years ago as Inala Assembly of God, by students of Commonwealth Bible College. The church moved to its current location in Thrush Street about thirty years ago [1980s]’.¹³⁶

¹³⁵ BCCA Survey and Record of Land card index

¹³⁶ http://www.newlifeinala.com.au/about_us.html



2017 photo

Churches of Christ - Citipointe Church Brisbane West, 26 Rosemary Street Durack



2017 Photo

Built c.1985 (Qimagery 1987) as the Durack Indoor Sports Centre:



Satellite 8 June 1998

It was advertised as the venue for the Southpointe Church of Christ in 2003.¹³⁷

Then in 2004 as Citipointe West.¹³⁸

See also Community Buildings: Sheltered Workshop? 152 Freeman Road Inala

Vietnamese Catholic Community 1990s?-56 Lilac Street Inala

Lot 943 Portion 355 was originally zoned as 'Church and Convent'. The land was used by the Brothers St Mark's Leagues Club P/L from 1966,¹³⁹ which in 1970 was granted building approval by BCC for a clubhouse. In 1975 they were granted BCC approval to build a licensed clubhouse of 1300m² at a cost \$250 000, with extensions in 1978 at a cost of \$52 000.¹⁴⁰

The club went bankrupt about 1980. The area has subsequently been converted into the Vietnamese Catholic Community complex including the 'Stations of the Cross'.

¹³⁷ *Suburban Star* September 2003 A Naumann collection.

¹³⁸ *Suburban Star* Sept 2003 A Neumann library

¹³⁹ Brothers Leagues Club website accessed Nov 2017.

¹⁴⁰ BCCA Survey and Record of Land card index



2017 Photo Stations of the Cross Lilac Street

Vietnamese Buddhist Assn. Chua Phat Da Temple c.1997 36 Deodar Street Inala

‘Phat Da Monastery is a new Monastery which is located near the city of Brisbane and very close to the Vietnamese populated suburbs such as Inala, Durack and Darra. Phat Da Monastery is a Holy place for those who really want to reduce suffering and develop calm insight, wisdom, tolerance and to practise the Buddhist morality through meditation, chanting and remembering the Amitta Buddha.’¹⁴¹



2017 photo

United Vietnamese Buddhist Congregations of Queensland - Phap Quang Temple, 12 Freeman Road Durack



¹⁴¹ <http://www.buddhistcouncilofqueensland.org/node/93>



2017 Photo.

Vietnamese Van Phong Huong Dao 2015 12 Deodar Street Inala



Vietnamese English Baptist Church 87 Poinciana Street Inala



Vietnamese Bible-Presbyterian Church 44 Poinsettia Street Inala

The Vietnamese Bible-Presbyterian Church worships at the Christian Reformed Church in Poinsettia Street with a Sunday Worship Service held from 12:00pm to 2:00pm. The service is in Vietnamese with English interpretation.¹⁴²

¹⁴² <http://inalacrc.org.au/>



Christian Church Samoa Australia c. 2000. 92 Eugenia Street Inala



2017 Photo O Le Alii O TagavaiIa = the Lord is my banner.

Samoan Methodist Church 472 Archerfield Road Inala

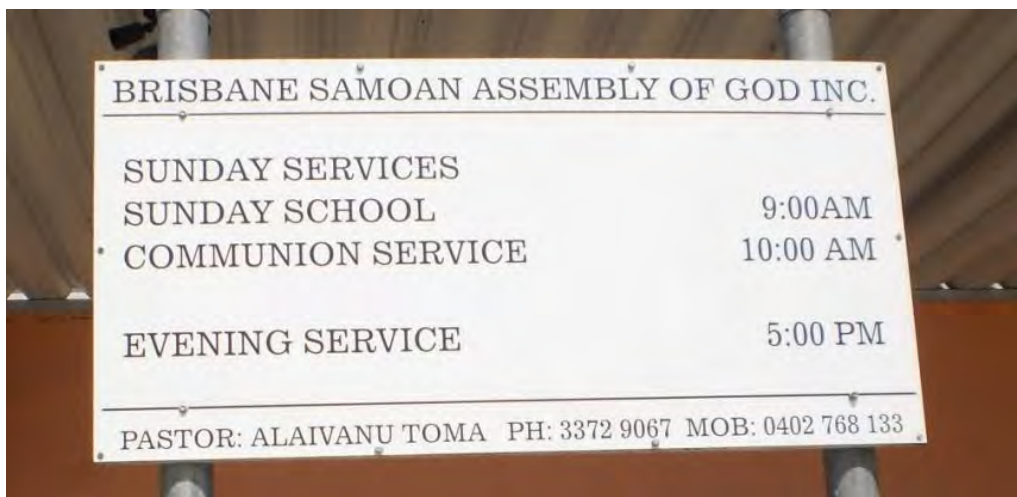
Previously Methodist Church 472 Archerfield Road

Samoan Wesleyan Methodist Church Old Inala Hall Rosemary Street Inala

Inala Old Library Abelia/Rosemary Streets Inala.¹⁴³



Brisbane Samoan Assembly of God Lilac Street Inala



¹⁴³ <http://wesleyan.org.au/find-a-church/> accessed July 2017



Assembly of God Church of Samoa, Corsair St Inala



The New Inala Community Hall, 2016 photo

‘Greetings to you all in the Name of our Lord Jesus Christ. Welcome to the Assembly of God Church of Samoa in Australia - Inala website.

‘We are blessed to worship in one of the most populated and multicultural areas of our sunshine state of Queensland in this great country of Australia. Whether you are simply visiting or looking for a church home, I would like to welcome you to worship with us every

Sunday morning. We are based in the New Inala Community Hall in Inala, Brisbane. Our services are conducted in both English and Samoan...¹⁴⁴

‘Welcome to the online site of the Assembly of God Church of Samoa in Australia – Inala, Queensland. Our Inala Parish was started in the year 2000 and is a Church which is founded on the Holy Spirit...’¹⁴⁵

By 2017 it may have become an African church.

Church of God 107 Pine Road Richlands

The Spanish Speaking Evangelical Church 107 Pine Road Richlands was listed in 2004. Today it is the Richlands Church of God where the Pastor is Miguel Arriaza.¹⁴⁶



Photo 2018

Guru Nanak Sikh Temple 2014, 16 Rosemary Street Durack

The building was originally a sports and recreation centre built c.1980, and for some time was operated as the Zest Centre and possibly the All Sports Centre. It became the Sikh Temple in 2014.¹⁴⁷

¹⁴⁴ <http://aogcos.com/>

¹⁴⁵ http://aogcos.com/about_us.htm

¹⁴⁶ <http://www.cogaus.org.au/church-of-god-richlands.html>

¹⁴⁷ Development Application notice, A. Naumann collection



Satellite c.1988



1983 QImagery photo showing the sports centre with tennis courts behind.

‘Guru Nanak Sikh Temple (Brisbane Gurdwara) is a Sikh place of worship, open to all human beings, irrespective of religion, race, cast, creed, and sex; provided they abide by the code of conduct and protocol mandated by the Sikh place of worship.

‘Sikhism is a modern and practical religion; it believes in one God whom all human beings should worship to receive salvation; it believes in 'caring, sharing and daring' - care for your

fellow beings, share your happiness and good fortune and they will share your sorrow and misfortune, and dare to be brave against injustice and oppression.¹⁴⁸



Sikh Temple 2016 photo

Islamic Society of Darra, 219 Douglas Street Darra

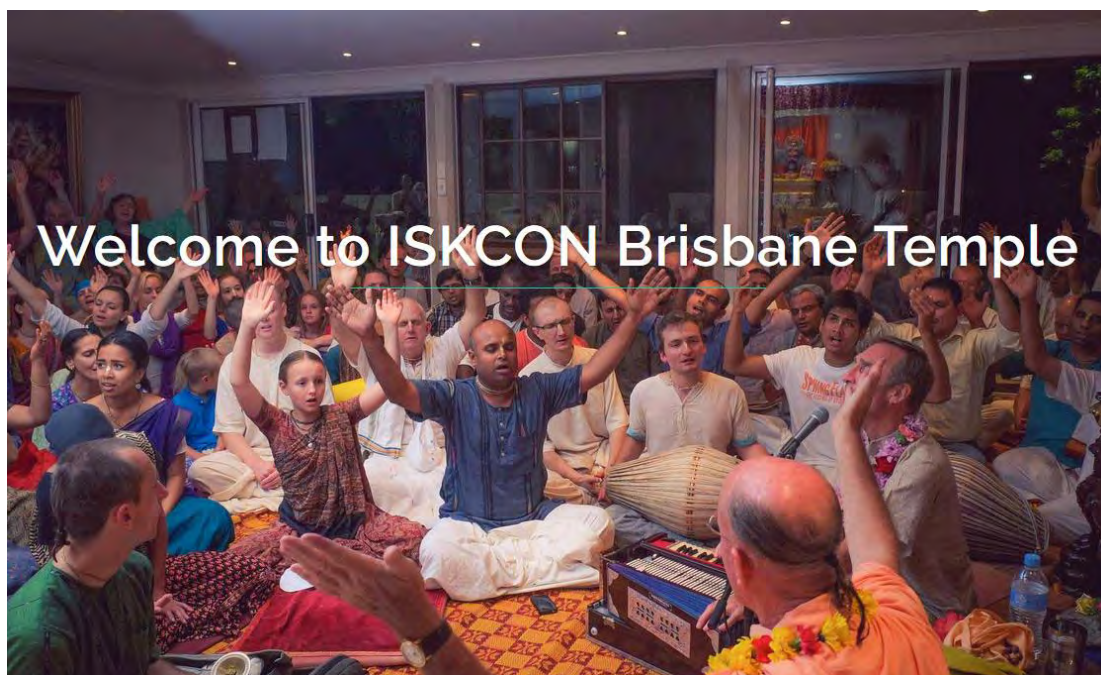


¹⁴⁸ <http://brisbanegurdwara.org.au/>

St Nicholas Serbian Orthodox Church, 48 Bandara Street Wacol 1977



Hare Krishna Temple [Hindu] 32 Jennifer St Seventeen Mile Rocks



Other churches

‘The Aboriginal People’s Church- the Aboriginal Inland Mission Community Fellowship was associated with Baptist Church ...which (in Inala began its prayer meetings at the home of retired missionaries, Harry and Audrey Kleinschmidt 197 Blunder Road Durack)...’¹⁴⁹. It was still operating in 2003.¹⁵⁰

The Hosana Church was operational for a time at 16 Rosemary Street, perhaps before the Sikh church began operation at this address.

Also Inala Tongan Wesleyan Methodist Church operated for a period from the Seventh Day Adventist Church in Crocus Street.

Neither Judaism [Jewish] nor Taoism [Chinese] are represented in the Inala area.

¹⁴⁹ G. Riley and Inala History Group, ‘*Richlands*, p. 28; Harry and Audrey Kleinschmidt interview with Sue Keays, 6 November 2000

¹⁵⁰ Activities Map May 2003 A Naumann collection

SUMMARY - PLACES OF WORSHIP RELEVANT TO INALA RESIDENTS

Methodist Church 1949- now Samoan Methodist Church 472 Archerfield Road Inala

Salvation Army Hall Azalea Street/ Poinciana Inala 1954 – 1975, now a kindergarten

Congregational Church 1955 – 1969 RAOB Hall – now Goodstart Kindergarten 1993 –
57 Poinsettia Street Inala

St Hugh's Anglican Church 1956- 105 Poinsettia Street Inala

St Mark's Catholic Church 1956- Lilac Street Inala

Congregational Church 1956- Church of Christ 2003 – later Samoa Westside Brisbane
Tecomia Street/Lavender St Inala

Gospel Hall Assemblies 1956 – Inala Christian Assembly 1962 – Great Hope Baptist Church
2003 - also Vietnamese English Baptist Church 87 Poinciana Street Inala

Baptist Union 1957 – now Westside Multicultural Baptist Church, 121 Biota Street Inala

Methodist Church 1958 - St Ives Uniting Church in Australia 29 Berrigan Street Inala

Glad Tidings Tabernacle 1959 – now Seventh Day Adventist Church 124 Crocus Street Inala

Lutheran Church of the Good Shepherd 1959- Inala Ave/Corsair Street Inala

Jehovah's Witnesses Kingdom Hall c. 1958 24 Freeman Road Durack

Salvation Army Inala Corps 1960 83 Inala Avenue Inala

Jesus Christ of the Latter Day Saints 1963- 20 Blackthorn Street Inala

Church of the Nazarene 1963- 22 Sitella Street Inala

Methodist Church 1966– opened as Community House - 40 Sitella Street Inala

[Seventh Day Adventist 1958] later First Reformed Church 1965 also now Vietnamese
Bible-Presbyterian Church 44 Poinsettia Street Inala

Assembly of God/New Life Church c.1990 (Pentecostal) 60 Thrush Street Inala

Church of God 107 Pine Road Richlands

Churches of Christ - Citipointe Church Brisbane West 26 Rosemary Street Durack

Vietnamese Catholic Community 1990s?-56 Lilac Street Inala

Vietnamese Buddhist Assn. Chua Phat Da Temple c.1997 36 Deodar Street Inala

United Vietnamese Buddhist Congregations of Queensland - Phap Quang Temple

12 Freeman Road Durack

Vietnamese Van Phong Huong Dao 2015 12 Deodar Street Inala

Christian Church Samoa Australia c. 2000. 92 Eugenia Street Inala

Samoan Wesleyan Methodist Church Old Inala Hall Rosemary Street Inala

Assembly of God Brisbane Samoan (Ex Ritz Theatre) Lilac Street Inala

Guru Nanak Sikh Temple 2014- 16 Rosemary Street Durack

Islamic Society of Darra 219 Douglas Street Darra

St Nicholas Serbian Orthodox Church 1977 48 Bandara Street Wacol

SERVICETON/INALA – BUILT ENVIRONMENT

10. THE CHANGE OF NAME IN 1951

Name change

When Hock Davis established the Serviceton Ex-Servicemen's Co-operative Society Limited (the Society) in 1946 and proposed the satellite town of Serviceton, the nearest residential community was adjacent, on the western side of Archerfield Road. It had existed as rural farmlets since 1928 and was known as Richlands Estate - Darra, as Darra was the nearest town. Initially Richlands residents had to go to the Darra Post Office to collect their mail.

In 1934 a formal mail delivery service began from Darra to the adjoining rural areas, and in Richlands the mail was delivered to Stanley H Webber's store on Archerfield Road and residents picked up their mail from there.¹⁵¹ Later it was delivered to Mr Gudge's house, also on Archerfield Road, opposite the proposed satellite town.¹⁵² By 1947 Fred Neilson was the contracted mail deliverer to Richlands residents.¹⁵³ In 1949 Keith Brough remembers 'I delivered the mail – sub-let by Neilsen'. About 1948 Hock Davis set up a cash and carry shop in what later became the Inala Post Office – an ex-wartime store again on Archerfield Road, opposite the proposed satellite town. Jack Boss remembers 'Hock Davis...where he ran a Post Office and a bit of a store' (This never was a post office, although for a while people might have collected their mail from there.)¹⁵⁴

The Society named the proposed satellite town 'Serviceton' from its beginnings in 1946, however it was not a suburb but a name for an area of land previously known as part of 'Boyland's Pocket', mainly within the Parish of Oxley, south of the Brisbane City Council suburb of Darra.

The first formal use of the name Serviceton was probably on the Master Plan prepared in 1946 for the Society, and Serviceton (Darra) became the accepted name for the area.

¹⁵¹ F Clark Richlands Early History of the Development of the Suburb p 75

¹⁵² F Clark Vicki Mynott Serviceton The soldier settlement that became Inala p 29

¹⁵³ F Clark Richlands Early History of the Development of the Suburb p 47

¹⁵⁴ F Clark Vicki Mynott Serviceton The soldier settlement that became Inala pps 29, 69, 76

In 1949, Hock Davis, Jack Stafford and Fred Cookman for the Society relocated two ex-army huts from Camp Darra to become a larger store and a house on Resub 213 (now the south-east corner of Archerfield Road and Magnolia Street).¹⁵⁵

Jack (Ted) Stafford: ‘...in 1949...Hock and I set up the Co-op’s General Store. Hock ran the post office for while – then later Cookman took it over...’¹⁵⁶ [Author’s note: it was never a formal post office.]

Mr Fred Cookman ‘We ...in 1949 moved into two big ex-Army buildings on the corner of Magnolia and Archerfield Rd. I lived with my family in one and managed the store in the other...’¹⁵⁷.

In 1950 the Society sold all the land and plans for the town to the Queensland Housing Commission and the name Serviceton (Darra) continued until the State Government announced the formalisation of the suburb of Inala in January 1952.¹⁵⁸

What led to the change from Serviceton to Inala?

Although the Society had sold all of its land to the Queensland Housing Commission (QHC) in 1950, a member of the Society Mr Cookman continued to operate the Co-operative store on behalf of the Society on Archerfield Road (corner of what is now Magnolia Street) which had opened in 1949. The land on which the store was situated was probably transferred by the QHC to the Society via a third party – eventually being transferred to the Society in 1953.¹⁵⁹

Although the Society set up the store in 1949, it applied for its first Council building permit in 1951. At this time the Society was approached by the Posts and Telegraphs Department (P&T) to have a post office established adjacent to the store, refer the following memo.¹⁶⁰

¹⁵⁵ *Serviceton The soldier settlement that became Inala* Fred Clark Vicki Mynott 2013 p 32.

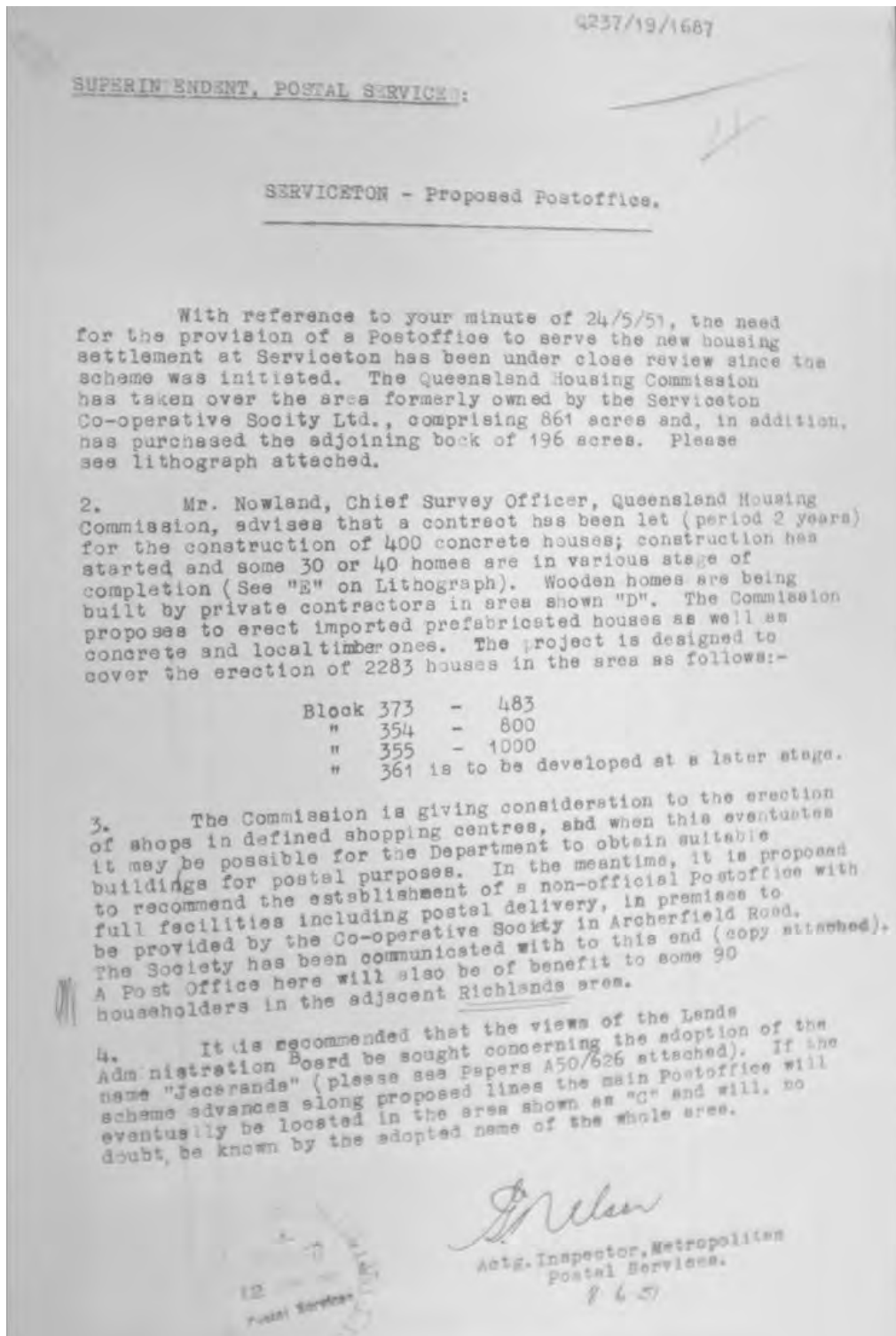
¹⁵⁶ *Serviceton The soldier settlement that became Inala* Fred Clark Vicki Mynott 2013 p 57-58

¹⁵⁷ *Inala News* 21 Feb 1964 F Cookman Letter to Editor

¹⁵⁸ <https://www.dnrm.qld.gov.au/qld/environment/land/placenames/search#/search=inala&types=0&place=Inala43379> accessed 22 Jan 2018

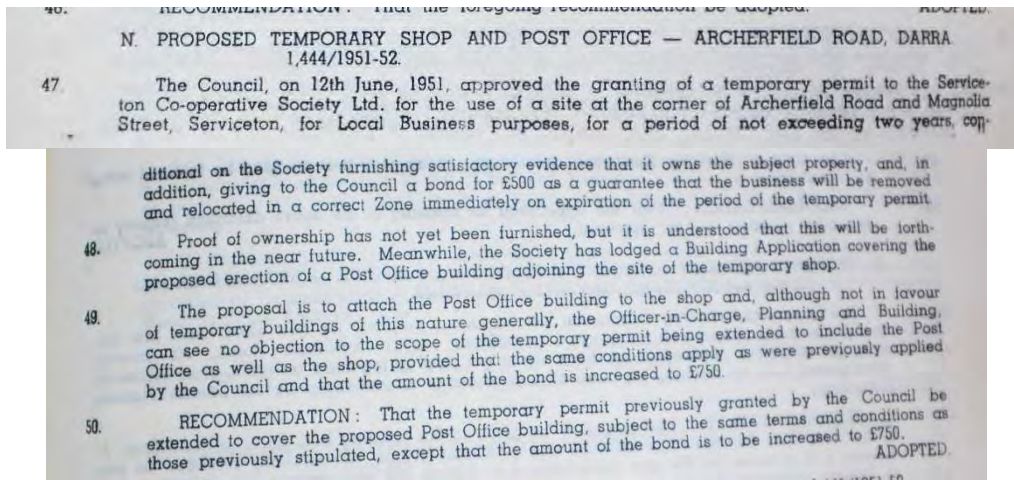
¹⁵⁹ Certificate of Title No 533194 Vol. 2659 Fol. 184

¹⁶⁰ NAA Post Office History file J3111 barcode 5071924



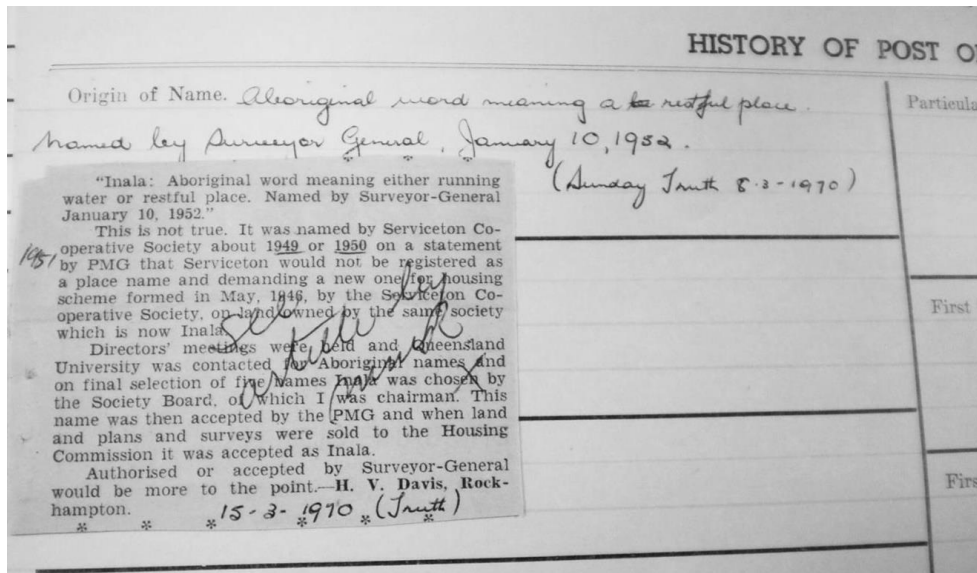
Months later, the Society received a further permit from Council to construct a Post Office alongside the store, although it didn't actually proceed with the construction.¹⁶¹

¹⁶¹ BCC Council minutes 1951-52 p 490, 491



The P&T were concerned about name confusion with an existing Serviceton Post Office in Victoria, and would not accept that name for the new Post Office. An alternative name of Jacaranda was suggested probably by the Society to reflect the Garden City nature of the project but this was not acceptable either. Eventually the replacement name ‘Inala’ was selected but quite how is the subject of several opinions:

‘from the local Aboriginal language by the Society instigator Harold (Hock) Davis and others, from a short list of suggestions by the University of Queensland, and translates approximately as ‘peaceful resting place’ or ‘good place to camp’’.¹⁶² Mr Davis reiterated this in a 1970 letter to the *Sunday Truth*:¹⁶³



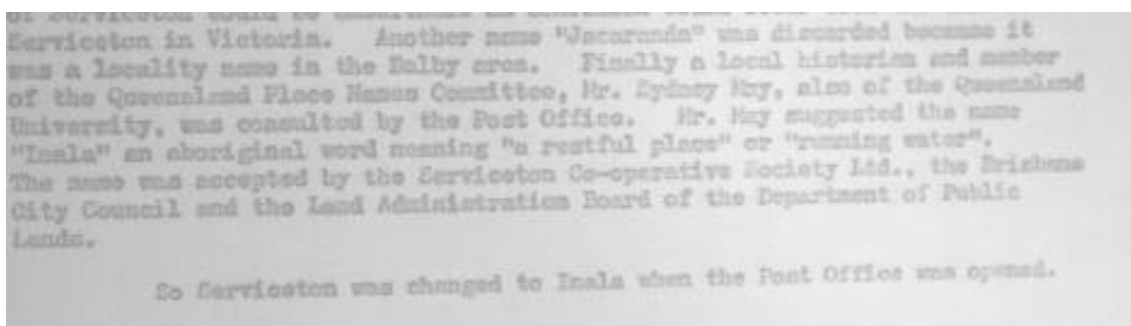
¹⁶² F Clark Vicki Mynott Serviceton The soldier settlement that became Inala RISHG 2013 p45, 46

¹⁶³ NAA file barcode 5071924



Sunday Mail 25 Nov 1951 p5

A Post Office history records:¹⁶⁴



It is important to recognise here that Post Offices at that time were run by the Posts and Telegraphs Department— a Federal Government department. Suburb names and boundaries were determined by the Lands Administration Board of the State Government but agreement was usually reached between the two so that post office and suburb names were aligned.

The State Government is responsible for setting suburb names and for changing boundaries over time, and for Inala its website states:

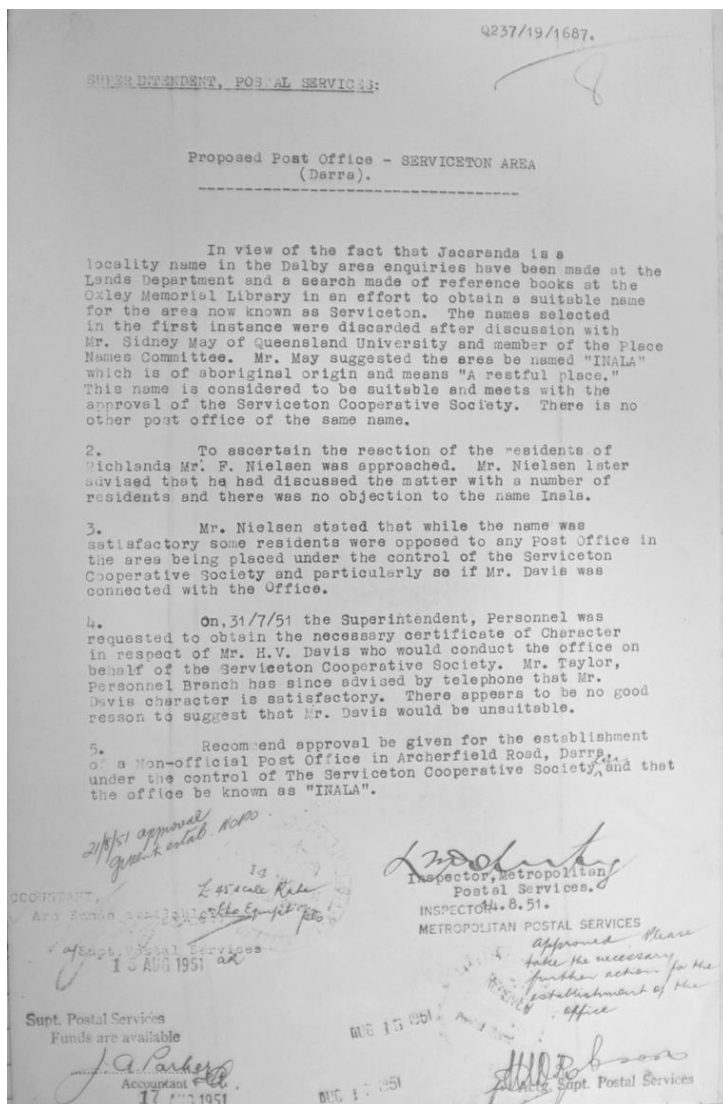
Approved as a suburb name by Minister for Survey, Valuation, Urban and Regional Affairs 1 June 1976. Boundaries amended by Governor in Council 20 April 1991. Boundary altered by the Minister for Natural Resources and Minister for Mines, 11 July 2003. The area was originally known as Boylands Pocket and was used mainly for grazing sheep. Named as a suburb by Surveyor-General on 10 January 1952, using an Aboriginal word, derived from Bundjalung language, Yugumbir dialect, indicating resting time or night time. Refer F.J. Watson. *Vocabularies of four representative tribes of South Eastern Queensland*. Brisbane, 1944, p.58. 165

¹⁶⁴ NAA file barcode 5071924

Following the Post Office decision, the BCC agreed to accept the name change from Serviceton to Inala in 1952.¹⁶⁶

- G. PROPOSED NAMING OF POST OFFICE AT SERVICETON. 1514/1951-52.
28. The views of the Council have been sought by the Administration Board regarding the naming of the non-official post office at Serviceton. The name "Jacaranda" was originally submitted, but this name was regarded as unsuitable and an alternative suggestion has now been made that the post office be known as "Inala." This name is stated to be of aboriginal origin, meaning "a restful place."
 29. * Apparently the name "Serviceton" is not acceptable to the Postal Authorities owing to its similarity to several existing offices throughout the Commonwealth.
 30. RECOMMENDATION: That the Land Administration Board be informed that no objection is offered by the Council to the adoption of the name "Inala" for the non-official post office at Serviceton. ADOPTED.

In August 1951 the Post Office wrote an internal memo:¹⁶⁷

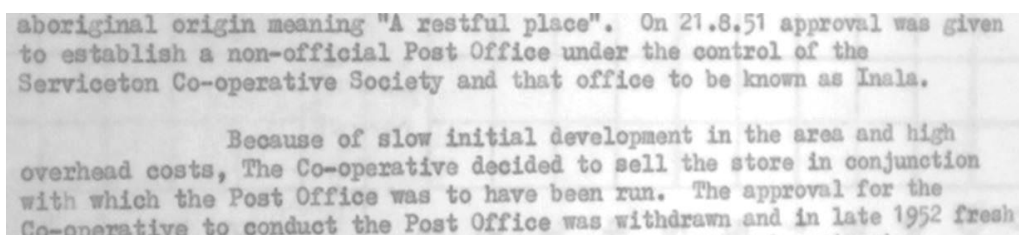


¹⁶⁵ <https://www.dnrm.qld.gov.au/qld/environment/land/placenames/search#/search=inala&types=0&place=Inala43379> accessed 22 Jan 2018.

¹⁶⁶ BCC Minutes 1514/1951-52 p 514

¹⁶⁷ NAA file barcode 5071924

It is possible that the Society could not meet the physical and financial requirements of the P&T, and anyway the Society went into formal liquidation on 17 Dec 1952.¹⁶⁸ The Post Office proposal did not proceed as noted in the Post Office files:¹⁶⁹



aboriginal origin meaning "A restful place". On 21.8.51 approval was given to establish a non-official Post Office under the control of the Serviceton Co-operative Society and that office to be known as Inala.

Because of slow initial development in the area and high overhead costs, The Co-operative decided to sell the store in conjunction with which the Post Office was to have been run. The approval for the Co-operative to conduct the Post Office was withdrawn and in late 1952 fresh

The QHC sold/transferred the land on which the store was situated in December 1951 to N Galley wife of W Galley, who later sold/transferred it to the Society.¹⁷⁰ (W 'Bill' Galley being a member of the Society and Hock Davis's wartime sergeant and friend) The Galley's did not operate or live at the store, so possibly Mr Cookman and later the Fuery's continued to run it on behalf of the Society.¹⁷¹ Towards the end of 1953 the land and the store were sold to Mr Brinkworth.

In February 1953 the matter was resurrected when Mr Cookman (the founding member of the Society and one of the few residents who took up their land allocation on Archerfield Road in 1949 and who had previously run the Co-op store), in his position as secretary of the Richlands Progress Association, requested the P&T arrange for a Post Office in the newly named suburb of Inala. The P&T replied that it had been trying to find a suitable building in the area.¹⁷²

¹⁶⁸ *Courier-Mail* 20 December 1952 p 8

¹⁶⁹ NAA file barcode 5071924

¹⁷⁰ Certificate of Title No 533194 Vol. 2659 Fol. 184

¹⁷¹ Email from Dr Galley (son of W and N Galley) 7 May 2017

¹⁷² NAA file barcode 5071924

Copy for information of Inspector, METROPOLITAN POSTAL SERVICE.

27/17/161
B078 245.
26
17th February, 1953.

C.257/19/1687

Dear Mr. Francis,

Representations by the Richlands Progress Association for improved postal facilities in the District.

Representations have been made to this Department by the Richlands Progress Association, (Honorary Secretary Mr. F. Cookman, Archerfield Road, Inala, via Deera) for the provision of improved postal facilities in the district.

It is considered that a post office located in Archerfield Road, between Pine and Progress Roads would be suitably placed to serve the residents of Richlands and the Serviceton housing settlement, known as Inala, for departmental purposes. Accordingly, applications were invited from persons interested in providing a suitable building and conducting a post office, but no application was received.

The members of the Progress Association may be assured that the area is being kept under close observation with a view to establishing a non-official post office as soon as possible, and I shall be glad if you will kindly advise Mr. Cookman accordingly.

Yours faithfully,
C.A.
(C. ...)
Director,
Posts and Telegraphs.

The Hon. Joe. Francis, M.P.,
Minister for the Army,
Federal Members' Rooms,
Commonwealth Offices,
Adelaide Street,
MELBOURNE, VICT. AUST.

The official files of the P&T include two very similar 'official histories' and part of one follows:¹⁷³

applications were called for the position of non-official postmaster, following representations from the Richlands Progress association. There were no applicants and a further call for applications closing on 19.3.53 resulted in a total of four being received. Mr. Frederick C. Cookman, an ex-serviceman who proposed to establish the Post Office in a building previously used by the United States Forces which he intended to lease and renovate, was successful and the office was opened on the 18th May, 1953.

(The wording is not quite correct as the building was a privately owned shop selling food etc to the United States Forces.) The building was on land owned by Mr Stanley but possibly tenanted by Mr Scalia:

¹⁷³ NAA file barcode 5071924

'Fred Clark: In 1942 Mr Scalia of Archerfield Road built a fibro-cement covered building, to trade with the US Army camped across the road, he was a chicken farmer at this time and the Scalias sold fried chicken, ice-cream and coco-cola, and a point that I wish to make is that this building became the Serviceton/Inala/Richlands Post office, it was never an army hut.¹⁷⁴

Part of the second Post Office History follows:¹⁷⁵

Thus the non-official Post Office at Inala was established in the leased premises of Mr. F.C. Cookman, in Archerfield Road between Pine and Progress Roads. Full postal facilities, including delivery to householders, Money Order and Savings Bank facilities, payment of War, Age and Invalid Pensions and Allotments, was provided. Hours of business were: Monday to Friday 9 a.m. - 12 Noon, 1 p.m. to 5 p.m.; Saturday 9 a.m. to 12 Noon. The office was opened on 18th May 1953 when the occupancy of houses in the area began in numbers.

First Telephone and Telegraph Office

Concurrent with the opening of the Post Office and in the same building, when an official telephone service was provided, a Telephone and Telegraph office was opened.

Local and trunk calls could be made from the Post Office from 18.5.1953. Also telegrams were received at the office for transmission by telephone to the Phonogram room in the city.

Elevation of Office

On 13th August 1959 the Central Administration of the Post Office in Melbourne approved the elevation of the Inala Post Office to official status. Meanwhile Miss Joyce Cookman became Postmistress following the resignation of Mr. Cookman on 26th September 1960. She remained as Postmistress, Inala, until the name of the office was changed to Inala West following the establishment of a new official Post Office in the Civic Centre. This new office was approved on 19th August 1964 by Central Office (replacing the original approval due to change in the pattern of development in the area).

¹⁷⁴ Clark F Richlands 1932 to 1949

¹⁷⁵ NAA file barcode 5071924



176

Shaw file Inala West
Inala West Post Office
previously Inala.
Official
The Post Office opened at the
Civic Centre, on Monday November 16
and became known as the
Inala Post Office
The office which had been previously
known as Inala was changed to
Inala West. It had opened
as a non official office on May 18, 1952
with Mrs E.C. Cookman as its
Postmaster. Miss Joyce Cookman, later
Mrs Grey was Postmistress
Information obtained for post office
P & 227/19/1667.
Joni Lightfoot
14/1/77

177

Controversy about the name change continued beyond the Government decision of 1952. In 1954 the newspaper reported:¹⁷⁸

¹⁷⁶ QSA QHC photo 1953

¹⁷⁷ NAA file barcode 5071924

¹⁷⁸ *Brisbane Times* 8 January 1954 p5

SUBURB GROWS UP WITHOUT SET PROPER NAME

A new Brisbane outer suburb that may soon house 14,000 people is growing up without a proper name.

Some residents call it Serviceton and others Inala.



MR BENSON



MRS. CORBETT

The suburb, about three miles from Oxley was originally Serviceton but postal authorities changed it to Inala to avoid confusion with Serviceton, Victoria.

Today—

● The post office is Inala.

● The name on the bus from Darra railway station is Inala.

● Many newer residents are calling it Inala.

BUT—

BUT—

● Most residents still call it Serviceton.

● The Housing Commission, which is building the estate, sticks to Serviceton.

Local storekeeper Mr. W. C. Brinkworth said today: "Most of the people here are used to

not suitable for postal purposes and after a number of alternative names were considered Inala was adopted, the spokesman said.

Residents used Inala as their postal address and the majority of letters for them were addressed that way.

Serviceton and want the name restored. The Post Office tried to call Wavell Heights Inala, but the people there wouldn't have it."

Other "Serviceton" supporters claimed that most non-residents had never heard of Inala and knew the place as Serviceton.

Inala supporters included:

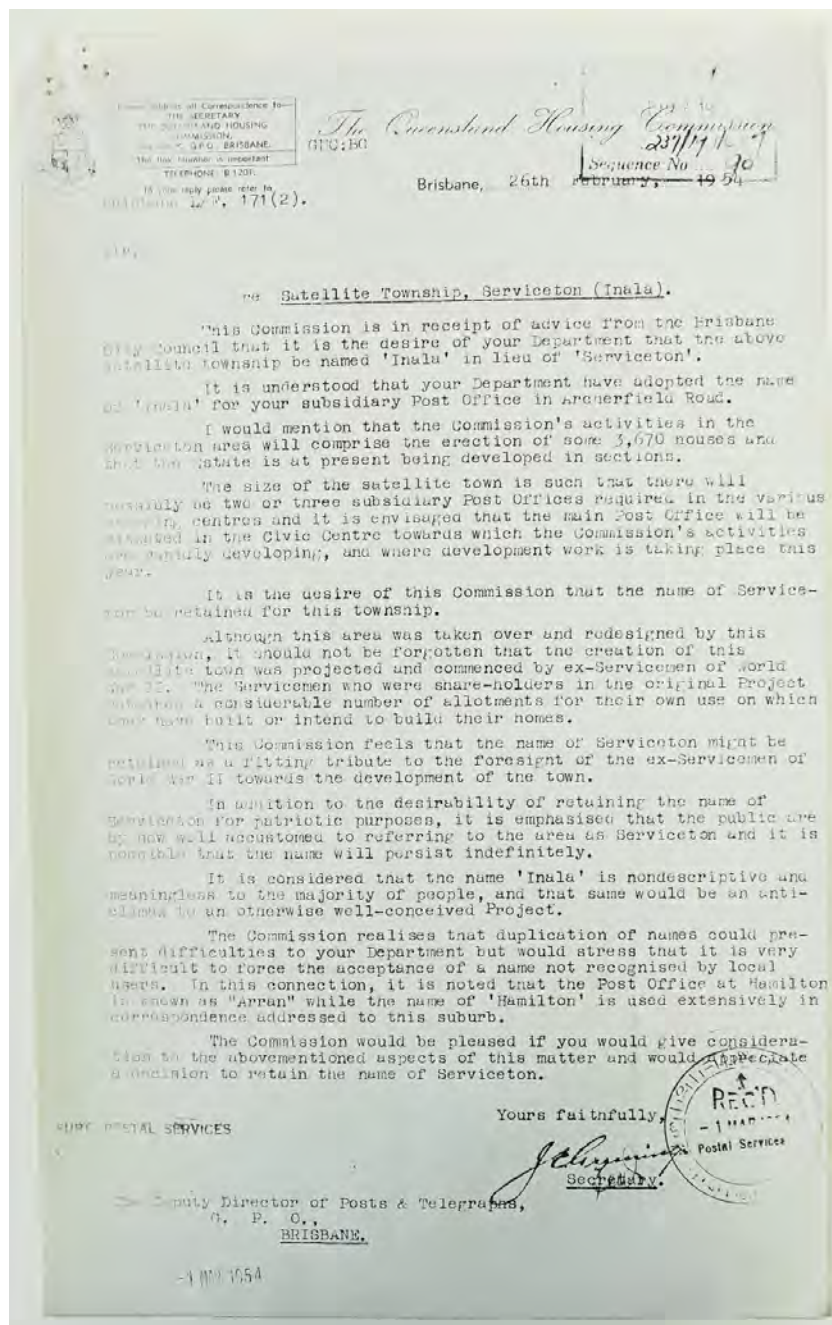
Mr. Michael Benson: "Inala sounds better. Many people mispronounce Serviceton as Servicetown."

Mrs. L. A. Corbett: "Inala sounds better for a 'bush' place like this."

Questioned by the "Brisbane Telegraph" a G.P.O. spokesman said that when establishment of a post office in the Serviceton area was being considered, a suitable name was sought to avoid confusion with Serviceton in Victoria.

The Serviceton Co-operative Society realised Serviceton was not suitable for postal

The Queensland Housing Commission – an arm of the State Government wrote a month later to the P&T requesting the name revert to Serviceton, however two years earlier the State Government as a whole had accepted and renamed the suburb Inala!¹⁷⁹



So, the planned Serviceton Garden City became the formal suburb Inala in 1952, and the Inala Post Office opened in 1953.

¹⁷⁹ NAA file barcode 5071924

Précis

In the 1930s the Richlands Estate postal address was 'Via Darra'.

A contractor initially collected mail at Darra and delivered it to a shop or later a house on Archerfield Road in Richlands, and this probably continued until 1953.

The name Serviceton came into public use for an area of land on the eastern side of Archerfield Road in 1946.

The Serviceton Society opened a co-op store (not a post office) on Serviceton land on Archerfield Road in 1949 under the management of Mr F Cookman.

When the QHC purchased the Society land in 1950, the P&T approached it (QHC) but was told there were no immediate plans for construction of a shopping area. The P&T reached agreement with the Society for a Post Office to be added to the co-op store.

The Society wanted it named the Serviceton Post Office but this was not acceptable; the name Jacaranda was considered but eventually the Aboriginal word Inala was agreed to.

The Society did not proceed, the co-op store was sold and the P&T withdrew the agreement.

The State Government established the suburb of Inala in 1952.

In 1953 Mr Cookman on behalf of the Richlands Progress Association pressed the P&T to open a Post Office, and he later entered into an agreement with the P&T to operate a Post Office in an existing building he leased from Mr Stanley.

The Inala Post Office was opened by Mr Cookman in 1953 serving the people of Richlands and Inala. In 1959 the status of the Post Office was raised and it probably at that time relocated to a shop in the Magnolia Street strip, and Mr Cookman's daughter took over as Post Master. In 1964 the name changed to Inala West Post Office when a new Inala Post Office opened at Civic.

Bibliography (Relevant RI&SHG Publications)

The RI&SHG resources include a Library, key items of which include:

Relevant works by Gertrude Riley from the 1980s:

- Historical Pictorial Richlands-Inala & Suburbs 1980s*
- Richlands State School 50th Anniversary 1934-1984*
- Photo album taken by Gert Riley c.1987*
- History of our Inala and suburbs 1988*
- Some more history of our Inala and Suburbs 1994*
- Inala our suburb: a publication of memories to commemorate the opening of the new Inala library 1994*
- Memories of WWII 1939-1949*
- What Inala means to me 1999*
- Richlands-Inala Historical Pictorial 1998*
- The History of Guiding in Inala 1998*
- Historical Images of Richlands Serviceton/Inala 1999 DVD*
- Inala BCC Calendar 2000*
- Dedication to Federation Australia 2001, 994.31 RIL*
- A publication of memories to commemorate the extensions to the Blue Fin Fishing Club*

Relevant books by Fred Clark:

- Ipswich Rd 1839 to 2005*
- Richlands Early History of the Development of the Suburb 2006/2016*

Relevant book by Fred Clark & Vicki Mynott:

- Serviceton The soldier settlement that became Inala 2007*

Relevant books by Vicki Mynott:

- 150 years Richlands, Inala & Neighbouring Suburbs in Brisbane's South West 2009*
- Blue Fin Fishing Club 2017*
- Richlands State School 75 years*
- Inala a brief history (1953-2018)*

Aaron Hagenbach

- Inala street names Parks and historical notes 2016*

Noel Wallis

- CD History Pics 1955 – 2005*