

COMMONWEALTH OF AUSTRALIA



**MEMENTO  
OF THE  
TARINGA  
REHABILITATION  
CENTRE**

170-202 SWANN ROAD, TARINGA,  
BRISBANE, QUEENSLAND  
Phone: 7-4151

*You will be very interested to know that rehabilitees, after leaving this Centre, may be trained further to employable standards in their future employers' workshops, at the expense of the Commonwealth Rehabilitation Service.*

*This arrangement is known as "on-the-job training", or, more precisely, "work therapy training": To quote the Minister for Social Services, the Hon. Hugh S. Robertson, it is "try-before-you-buy".*

From the illustrations contained herein it will be noted that medical progress and vocational activity go hand-in-hand: Thus no time is lost on the way back to employment.



# The TARINGA REHABILITATION CENTRE

The Taringa Rehabilitation Centre plays a vital role in the programme of total rehabilitation as practised by the Commonwealth Rehabilitation Service.

Originally the home of Mr. George Marchant, the 5-acre property was purchased by the Commonwealth in 1950. It has been progressively expanded, and specially equipped to carry out its important task.

**A Rehabilitation Centre is neither a hospital nor a convalescent home. It is a place where all activities, all planning, all thinking, have a single purpose—the preparation of the disabled for independence through employment.**

**Under medical supervision, trained specialists carry out a carefully co-ordinated programme for each person: disabilities are overcome: physical fitness is restored or brought to a maximum: amputees learn to use new limbs: confidence is strengthened.**

In the Centre's industrialised workshops, latent abilities are discovered and fostered: vocational possibilities are studied and assessed: abilities are tested in a multiplicity of general occupational requirements: training in work practices of several basic trades and callings permit assessment of each individual's work capacity. When the time comes, employment officers assist to find them suitable work.

For some, a period of up to three months in the Centre is sufficient. The more severely disabled may require twelve months or longer. The road to recovery varies with each individual.

The Centre has a treatment capacity of 160 persons a day. Residential accommodation is provided for 52 males and 17 females. Others live at home and attend daily.

It is a **free service** to disabled persons who are in receipt of a pension or a benefit paid by the Department of Social Services, and to adolescents aged 14 and 15 years—also included are widow pensioners who are disabled and who desire to become employed. **For these people, full employment is the goal of rehabilitation.**

Other disabled persons may be given rehabilitation treatment on payment of the cost involved.

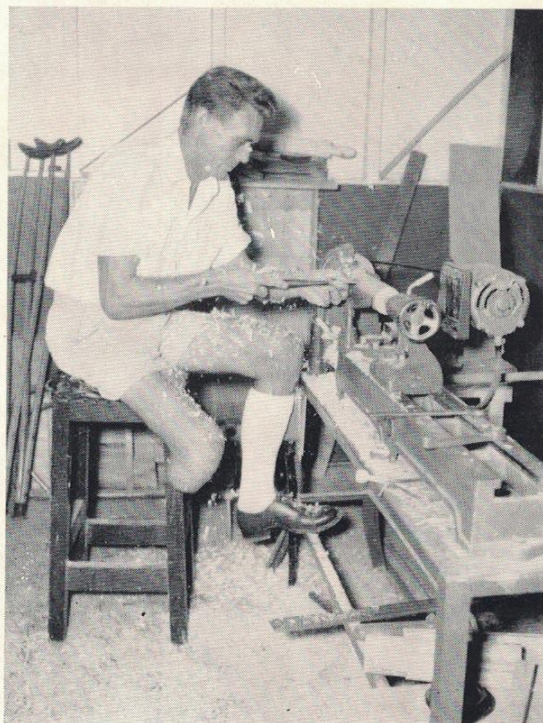




# *The* **COMMONWEALTH REHABILITATION**

In the growing complexity of our modern world, temporary or permanent disablement often creates a web of problems—medical, social and economic—which the individual can seldom comprehend, much less disentangle. On the other hand, facilities have now been developed which can, in many cases, help to solve these problems and avert much of the waste and tragedy of invalidism.

The last two decades have seen great advances in the field of physical medicine; progress has been made in the design and fitting of prosthetics; techniques have been developed for assessing work capacities; agencies exist to help with social problems; there are extensive facilities in the community for vocational training, and industry and business have scope for the employment of the handicapped. When all these resources are applied to the needs of an individual in a deliberate and co-ordinated plan with a job as its goal, we have the modern concept of rehabilitation.



# SERVICE



The Commonwealth Rehabilitation Service, which is administered through the Department of Social Services,

- was introduced by the Commonwealth in 1948.
- helps those with a disability who have a chance of entering employment within three years of starting rehabilitation.
- employs in each State teams of doctors, therapists, trades instructors, vocational counsellors and social workers, and other specialists, to achieve its object.
- works in co-operation with the Commonwealth Employment Service and other Commonwealth Departments, State Departments and voluntary organisations.
- has established rehabilitation centres in all States, other than in Tasmania where it makes use of State facilities.
- has placed more than 15,500 disabled Australians (including 4,000 in Queensland) in employment in business and industry. Instead of receiving £3,000,000 per year from the Commonwealth in pensions and like payments, these people now earn two or three times that amount by their own efforts. The annual cost of operating the Rehabilitation Service is approximately £700,000.



# REHABILITATION : A COMMUNITY RESPONSIBILITY

Rehabilitation offers to the handicapped the opportunity to live full and independent lives and to fulfil old desires and new hopes.

Throughout Australia much is being done—and more is planned—by voluntary and governmental agencies to provide adequate services for the disabled.

These agencies are aware that rehabilitation is not the province of any particular organisation but demands the application of so broad a range of techniques and resources that each can play an important part. They realise that in co-operation lies the greatest hope for the future.

But, in the final analysis, however strong and effective might be these organisations, the only criterion of success, from the disabled person's point of view, is the extent to which he is accepted by the community.

Rehabilitees ask—

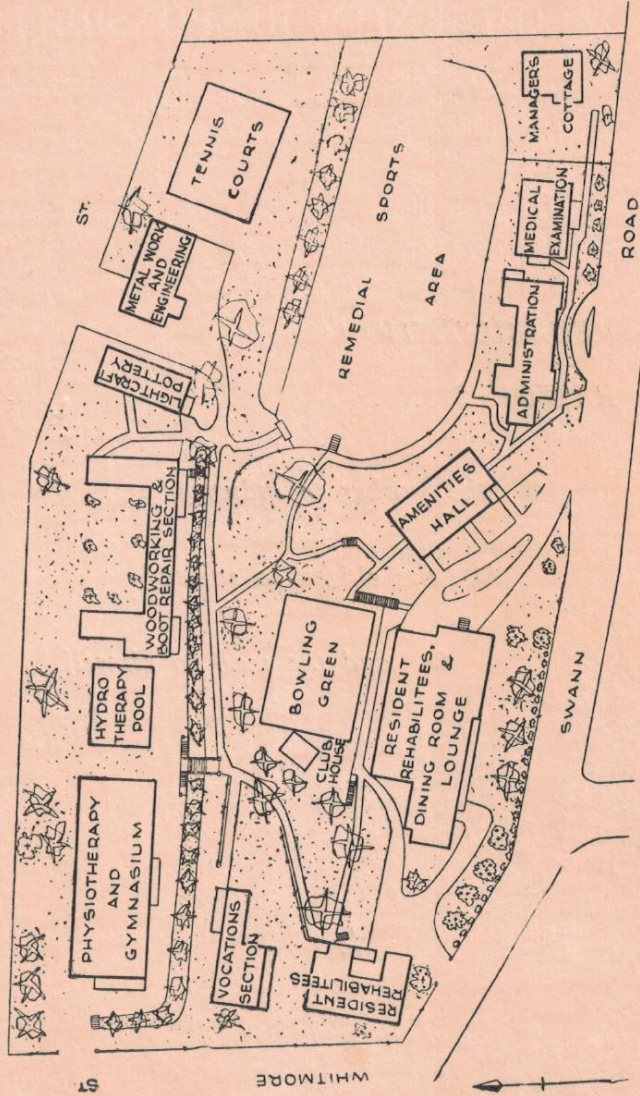
- that their abilities be assessed not their disabilities;
- that employers be willing to give the disabled a chance to prove they can pull their weight;
- that their status and dignity as individuals be recognised;
- that their fellow workers give them understanding and encouragement;
- that their need for and right to independence be considered.



The rehabilitation of our physically handicapped citizens is an undertaking to which governmental and voluntary bodies are devoting time, skill and money; but they can only achieve a full measure of success when they receive the active co-operation and support of the community as a whole.



SEVEN OAKS



ST.

TENNIS COURTS

METAL WORK AND ENGINEERING

POTTERY

LIGHT CRAFT

WOODWORKING & BOOT REPAIR SECTION

HYDRO THERAPY POOL

PHYSIOTHERAPY AND GYMNASIUM

VOCATIONS SECTION

RESIDENTS REHABILITATES

BOWLING GREEN

CLUB HOUSE

RESIDENT REHABILITATES, DINING ROOM & LOUNGE

AMENITIES HALL

REMEDIAL SPORTS AREA

ADMINISTRATION

MEDICAL EXAMINATION

MANAGERS COTTAGE

ROAD

SWANN

55

WHITMORE

TARINGA REHABILITATION CENTRE



Mr "Jim" Childs

Beryl Voss.

St. Peter's Lutheran College  
Blairie Marshall

Emmanuel College

St. Bonnie Cromwell College

REHABILITATION *Farrier King's.*

RESTORES . . . *District*

- the worker to industry

*Hattie Cochran, Women's*

- the citizen to society

*College.*

- and the man to himself

